



## CONSTRUCTION UPDATES & ACTIVITIES

*Week Ending October 31<sup>st</sup>, 2025*

### SLO Campus Center

**Work this week:**

- Countertops
- Ornamental Railing
- Colored Glazing - ESS
- Drinking Fountains
- Electrical/F.A.
- Touch Up Work

**Noise:** Loud noise from equipment & trucking

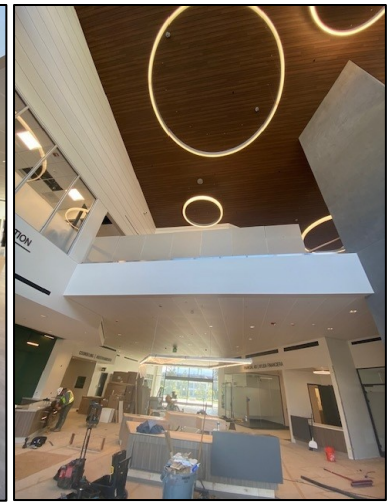
**Parking:** None

**Utilities:** No Interruptions

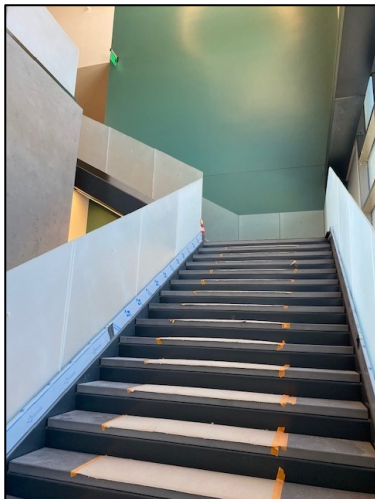
**Odors:** None



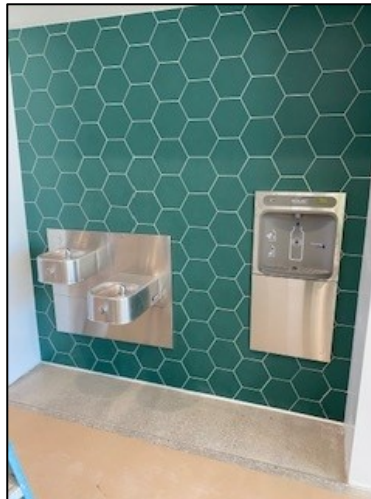
*ESS Glass*



*Ornamental Railing*



*Ornamental Railing*



*Drinking Fountains*



*Acoustical Tiles*