



## CONSTRUCTION UPDATES & ACTIVITIES

*Week Ending May 9<sup>th</sup>, 2025*

### SLO Campus Center

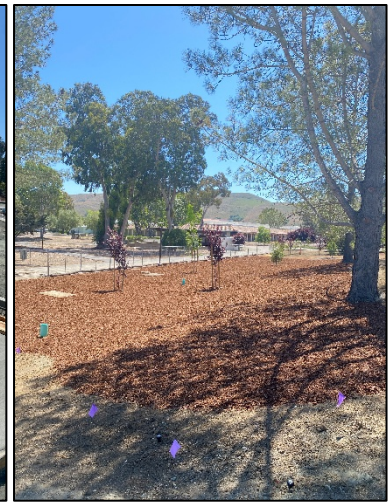
#### Work this week:

- Mechanical/Electrical/Telecom
- Metal Ceiling (Aircraft Cable Installation)
- T-Bar Ceilings Continued
- L Angle at Corridors
- Drywall Reveals in Boardroom
- Plaster at Elevator
- Metal Panels
- Insulation
- Interior Painting
- Tube Railings
- Grading at Building Entry/Traffic Loop
- Concrete Formwork at Building Entry
- Landscape Hardscapes & Planting Prep.
- Earthwork for Asphalt Prep.

**Noise:** Loud noise from equipment & trucking  
**Parking:** None  
**Utilities:** No Interruptions



*Concrete at Entry*



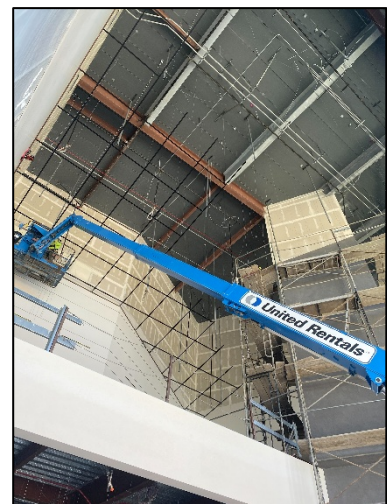
*Landscaping*



*Elevator Exterior Stucco*



*Acoustical Grid*



*Decorative Ceiling Tile*