



## CONSTRUCTION UPDATES & ACTIVITIES

*Week Ending December 27<sup>th</sup>, 2024*

### 4000 Switchgear Replacement

**Work this week:**

- Concrete Flatwork Installed
- Remaining Electrical Equipment Installed
- 4000 Complex Electrical Power Turned On

**Noise:** Hand tools, power tools, and excavation equipment.

**Parking:** Contractor parking located at laydown yard.

**Utilities:** 4000 Complex electrical outage.

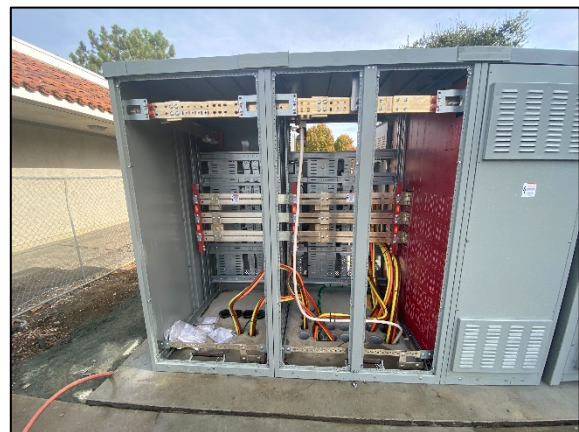
**Odors:** Diesel Fumes.



*Base and Rebar for Concrete Flatwork*



*Electrical Gear Enclosures*



*Landed Switchgear Feeders*