



**CONSTRUCTION UPDATES & ACTIVITIES**

*Week Ending December 13<sup>th</sup>, 2024*

**SLO Campus Center**

**Work this week:**

- 2<sup>nd</sup> Floor HVAC Duct Rough-In
- 2<sup>nd</sup> Floor Interior Electrical Rough-In
- Exterior Plaster
- Exterior Curtain Wall Installation
- Interior Metal Stud Framing
- Interior Insulation Installation
- Interior Drywall & Tape
- Painting – 1<sup>st</sup> Floor
- Ceramic Tile – Mortar Beds
- Parking Lot 4 Subgrade/Base
- Parking Lot 4 Concrete Curbs
- Parking Lot 4 Lighting
- Irrigation Installation
- Precast Concrete Bench Installation

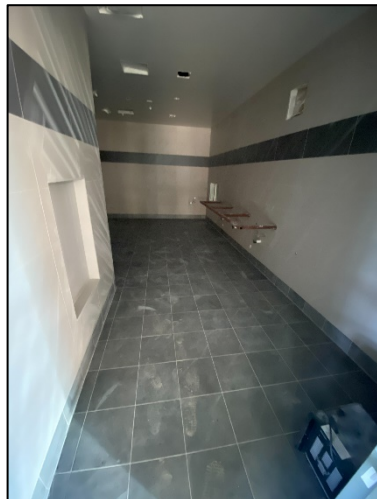
**Noise:** Loud noise from equipment & trucking  
**Parking:** None  
**Utilities:** No Interruptions



*Exterior Plaster*



*Curtain Wall Installation*



*Restroom Tile*



*Drywall Taping – 2<sup>nd</sup> Floor*



*Concrete Walks*