



**CONSTRUCTION UPDATES & ACTIVITIES**

*Week Ending October 25<sup>th</sup>, 2024*

**SLO Campus Center**

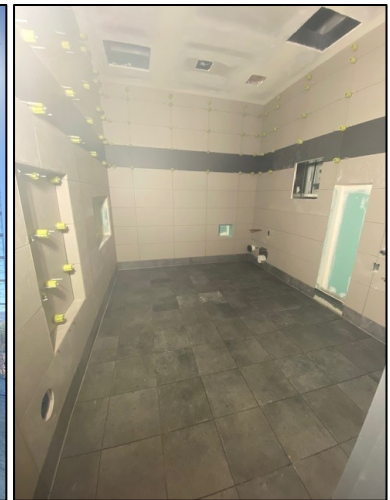
**Work this week:**

- 2<sup>nd</sup> Floor HVAC Duct Rough-In
- 2<sup>nd</sup> Floor Interior Electrical Rough-In
- Exterior Plaster
- Interior Metal Stud Framing
- Interior Insulation Installation
- Interior Drywall & Tape
- Ceramic Tile
- Parking Lot 4 Concrete Curbs
- Parking Lot 4 Sub Grade/Base
- Parking Lot 4 Lighting

**Noise:** Loud noise from equipment & trucking  
**Parking:** None  
**Utilities:** No Interruptions  
**Odors:** None



*Exterior Plaster*



*Ceramic Tile*



*Framing at Elevator Shaft*



*Base at Parking Lot 4*



*Electrical for Site Lighting*