



CONSTRUCTION UPDATES & ACTIVITIES

Week Ending September 1, 2023

SLO Campus Center

Work this week: The contractor began excavation of the building pad footings and tie-beam footings.

Site utility contractor continued installation of site storm drain utility, gas service, and started under slab electrical conduit installation.

- Noise:** Loud noise from equipment & trucking
- Parking:** No Impact
- Utilities:** No Impact
- Odors:** None



Pad Footing & Tie-Beam



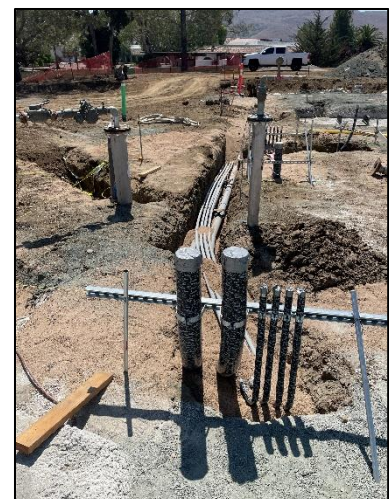
Pad Footing w/ Rebar



Site Storm Drain



Site Gas Main Line



Under Slab Electrical