

PROJECT STATUS REPORT

November 2020 ♦ Issue 59

R&B Shultz Early Childhood Education Center

Project Overview

Currently, the North County Campus' Early Childhood Education program is located in portable buildings. The high-demand program offers both childcare services and lecture courses. The new one-story R & B Shultz Early Childhood Education Center will continue to provide two levels of childcare (toddler and preschool) and include faculty offices, additional parking adjacent to the new structure and dedicated teaching spaces related to early childhood education. The drawings were approved by the Division of the State Architect on January 30, 2018 and was awarded as a single General Contractor project to AMG & Associates, Inc. on December 6, 2018. Construction commenced on January 2, 2019 with an anticipated completion date in the fall of 2020.

Project Progress

During the month of November, the contractor continued with work in the exterior play yard, installing metal fencing, irrigation, raised platform and trellis. The slide foundations have been formed and are ready for concrete. The outdoor covered play area radiant heaters have been installed and are operational. On the interior of the building, the contractor is wrapping up all the finishes. Countertops and vinyl flooring are nearly complete, bathroom tile is complete. All plumbing fixtures and accessory are currently being installed. The building's boiler was commissioned, and Cuesta Facilities staff received training.

Project Schedule

In the month of December, the contractor will complete the play yard construction with the installation of irrigation and turf, kids slides, perimeter fencing and filling up the sand boxes. On the interior, they will continue with the finishes, hanging all remaining doors and countertop installations. The electronic access control system will be installed and programmed, and the HVAC system will get tested and balanced. The project is on schedule to achieve substantial completion around the end of the year.



Countertop and Plumbing Installation Progress



Play Yard Metal Fencing and Raised Platform Progress

PROJECT STATUS REPORT

November 2020 ♦ Issue 59

R&B Shultz Early Childhood Education Center



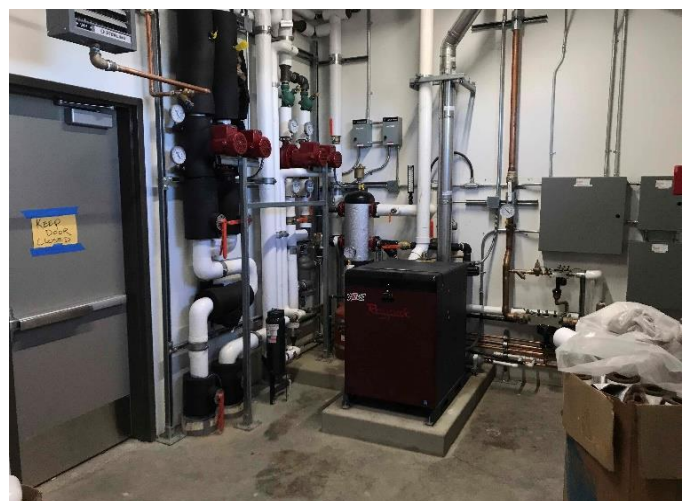
Toddler Yard Slide Mound and Turf Area Progress



Preschool Yard Trike Path and Trellis Progress



Outdoor Covered Play Area Radiant Heaters



Building Boiler Installed and Commissioned

PROJECT STATUS REPORT

November 2020 ♦ Issue 59

NC Sitework Improvement Phase 1

Project Overview

The North County Sitework Improvement project will be constructed in two phases. Phase 1 includes a new entry off Buena Vista Drive that will serve as the gateway to the North County Campus. The new main entrance loop will feature a pick-up/drop off area, flagpole plaza, and RTA bus stop. To best serve campus visitors, the existing Parking Lot 10 will be reconfigured with additional ADA and short-term parking provided at the entrance of the Campus Center. Phase 2 will create a new central campus area with pedestrian promenade, anchored by the Campus Center at one end and the Learning Resources Center at the other. Over this connection, interlocking paths and gathering spaces tie together the existing and future buildings of the campus with a network of landscaping, concrete benches, charging/hydration stations, and trees. The drawings were approved by the Division of the State Architect on July 20, 2020 and was awarded to Seamair Construction, Inc. on August 11, 2020. Construction commenced on August 17, 2020 with a Phase 1 completion date of December 2020. Phase 2 is anticipated to begin in the second quarter of 2021.

Project Progress

During the month of October, the contractor completed the installation of site storm drainage and irrigation lines. Conduit for site lighting is nearing completion. Rough grading of the traffic areas has been completed and base has been placed. A large portion of the curb and gutter has been poured at the drive aisle entry and the drop off entry loop.



Grading at the Main Entry Drive Aisle

Project Schedule

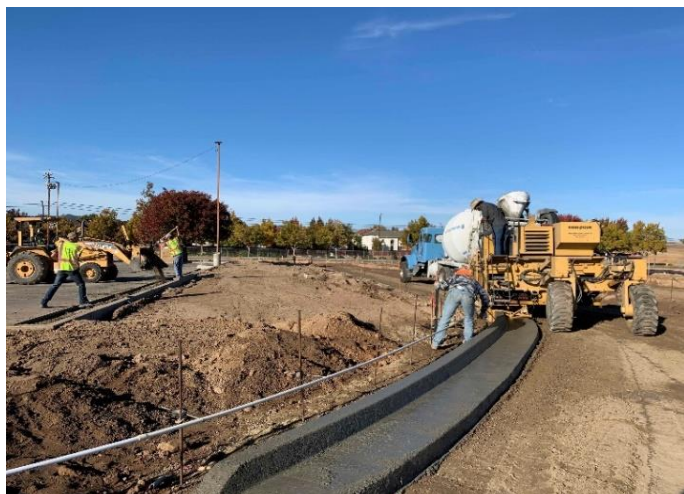
Over the next month, the contractor will finish grading for ADA ramps and pedestrian areas and place concrete. Main entrance masonry walls are scheduled to begin at the start of the December. Light pole bases are scheduled to be poured in the upcoming weeks with light pole placement to follow. Asphalt paving is scheduled to begin the mid-December. Phase I for this project is on schedule to be complete by December 2020.



Curb Formwork in Lot 10

**NC Sitework Improvement
Phase 1**

Curb and Gutter Progress at Drive Aisle Entry & Drop Off Entry Loop



PROJECT STATUS REPORT

November 2020 ♦ Issue 59

District Road Improvements Asphalt & Overlay Project Phase 2

Project Overview

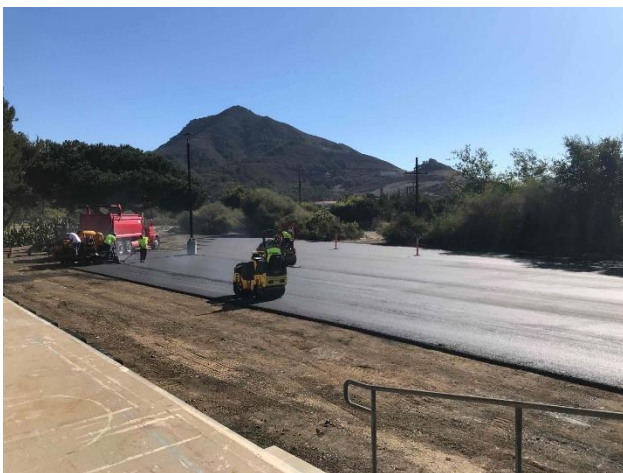
The District has identified several parking lot and roads that need repair at the San Luis Obispo & North County Campus. A new asphalt parking lot will be constructed at SLO Parking Lot 1 adjacent to the track. SLO Parking Lot 2 & Parking Lot 7 and Basketball Courts will receive a two-inch grind and new asphalt paving overlayment. SLO Parking Lot 2A & Education Drive and North County Parking Lot 11 will receive an asphalt slurry seal to refresh and preserve the existing asphalt. The drawings were approved by the Division of the State Architect on August 25 and September 1, 2020 and was awarded to Newton Construction & Management on October 8, 2020. Construction commenced on October 12, 2020 with an anticipated completion date of December 2020.

Project Progress

During the month of November, the contractor has completed the grading in parking lot 1 and is now ready for asphalt paving. Education Drive has received a seal coat and new striping. Existing asphalt in parking lot 7 has been ground and a new 2" asphalt overlay applied. The basketball courts now have new asphalt paving as well as the walkway along parking lot 6 to the baseball field. The new concrete driveways to parking lot 2 have been completed.

Project Schedule

Over the next month, the contractor will complete the new asphalt paving in Parking Lot 1 and overlay in Parking Lot 2. North County Parking Lot 11 Seal Coat is scheduled for late December. The project is on schedule to be complete by the end of the year.



Parking Lot 7 – Shipping and Receiving new
Asphalt



Seal Coat and Striping at Education Drive

PROJECT STATUS REPORT

November 2020 ♦ Issue 59

SLO Campus Roof Replacement Phase 1

Project Overview

The SLO Campus Roof Replacement Project will address the remaining building roofs in need of replacement on the Campus. The construction will be phased, spanning from Fall 2020 through Fall 2021. Phase 1 will consist of Buildings 4100, 4300, 4400, 6200 and 7100 annex. Phase 2 will consist of Buildings 2500, 4000, 6100, 6300 and 7100. The project was bid as two packages, Roofing and Electrical, on July 7, 2020 and awarded to WSP Roofing & Smith Electric respectively on August 6, 2020. Construction commenced on September 23, 2020 with a Phase 1 completion date of December 2020. Phase 2 is anticipated to begin in the second quarter of 2021.

Project Progress

During the month of November, the contractor completed the demo and new roofing installation on building 4100 along with the remaining detail work on the roof of building 4300.

Project Schedule

In the month of December, the contractor will begin the demolition of existing and installation of the new roof on building 7100 annex along with installing the parapet cap on buildings 4100, 4300, 4400, and 6200. The project is on schedule to be complete by December 2020.



Demo of Existing Roof on Buildings 4100



New Roof Installed on Buildings 4100

PROJECT STATUS REPORT

November 2020 ♦ Issue 59

Districtwide Signage & Wayfinding

Project Overview

Wayfinding, or a person's sense of orientation and navigation around the campuses, has been identified as a high priority need. Both campuses will benefit from improved wayfinding strategies, such as directional signage and improved building identification signage. Programming kicked-off in Fall 2020 and design is anticipated to be complete mid-2021. The project design will go to DSA for approval prior to starting construction in late 2021 or early 2022.

Project Progress

The Bond Team has met with the Signage and Wayfinding Committee to review the preliminary signage concept design. The committee also attended a site walk to review signage placement locations and preferred wording.

Project Schedule

The consultants are working on a proposal to continue with design through construction administration now that we have completed the conceptual phase.



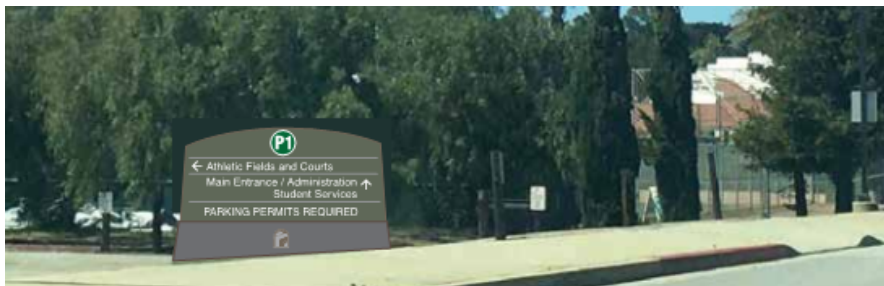
G PEDESTRIAN DIRECTIONAL/DIRECTORY



E CAMPUS DIRECTORY/INFO KIOSK



H BUILDING I.D. WALL SIGN



C VEHICULAR DIRECTIONAL SIGN