

**R&B Shultz Early
Childhood Education Center**

Project Overview

Currently, the North County Campus’s Early Childhood Education program is located in portable buildings. The high-demand program offers both childcare services and lecture courses. The new one-story R & B Shultz Early Childhood Education Center will continue to provide two levels of childcare (toddler and preschool) and include faculty offices, additional parking adjacent to the new structure and dedicated teaching spaces related to early childhood education. The drawings were approved by the Division of the State Architect on January 30, 2018 and was awarded as a single General Contractor project to AMG & Associates, Inc. on December 6, 2018. Construction commenced on January 2, 2019 with an anticipated completion date in the Fall of 2020.

Project Progress

During the month of February, the contractor completed the installation of the exterior sheathing and are well underway with the installation of the exterior weather barrier. The contractor is also continuing to work on the installation of hangers, wall track and mechanical, electrical, plumbing, and fire sprinkler (MEP) rough-in. Interior metal framing is nearly complete and the contractor has commenced with the installation of insulation and drywall. The framing of the parapet well and roofing continues.

Project Schedule

In the upcoming month, interior drywall, insulation and roof dry-in will continue. The exterior weather barrier will be completed and exterior window frames will be installed. The contractor will continue on interior MEP rough-in. The overall project remains on schedule to complete in fall of 2020.



Framing & MEP Rough-in Progress



Drywall Installation Progress

**R&B Shultz Early
Childhood Education Center**



Insulation Installation



Installation of Weather Barrier



Roofing Progress



Exterior Sheathing & Dry-in of
Storage Buildings

**Hollister Adobe
Rehabilitation**

Project Overview

The Hollister Adobe, built in the early 1800s, is located on the San Luis Obispo Campus. This project is ongoing and will span all issuances. Although restoration took place in 1970, damage caused by the December 2003 San Simeon Earthquake resulted in the closure of the adobe. The adobe will undergo stabilization renovations to preserve this historical building and return it to functionality. This stage of the rehabilitation project will help to stabilize and reinforce the adobe walls. The project was awarded to Newton Construction & Management in August 2019 and construction commenced on January 6, 2020.

Project Progress

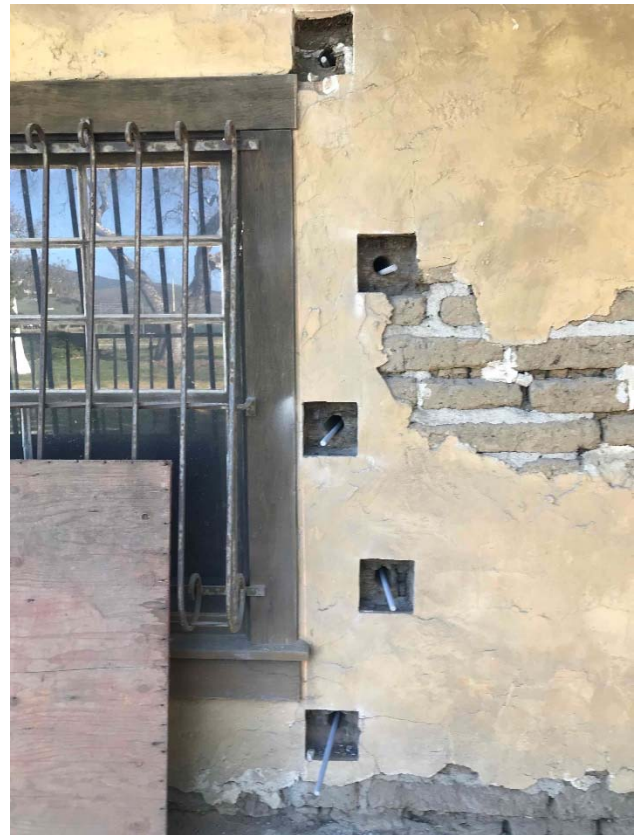
In the month of February, the contractor has started the installation of fiberglass rods to increase the structural integrity of the building. Once the rods have been installed the holes will be filled with a modified Adobe mud mixture to secure the rods in place. A doorway, unoriginal to the adobe and impacting the structural integrity, was also removed and the contractor has begun to infill with new adobe block. The adobe blocks arrived on site from Arizona mid-February.

Project Schedule

The contractor will continue to core holes for the fiberglass rods. The doorway infill work will begin once the new adobe blocks have been delivered. The project is currently on schedule to be complete in March 2020.



Adobe Brick Door Infill



Installation of Fiberglass Rods