

PROJECT STATUS REPORT

June 2017 ♦ Issue 18

San Luis Obispo Instructional Building

Project Overview

The new Instructional Building on the San Luis Obispo campus will be a 32,000 square foot, two-story structure. The first floor of the building will be comprised of eight high-capacity multi-discipline classrooms capable of serving up to 50 students each. It will also have one forum size classroom with a full capacity of 80 students. The second floor of the structure will consist of more than 40 offices, a staff lounge area and three meeting rooms. Construction commenced on April 11, 2016 with an anticipated completion date in the fall of 2017.

Project Progress

During the month of June, first floor HVAC ducting was completed and classrooms walls are ready for paint. The contractors continued with the elevator and channel glass system install which are roughly 85% and 75% complete respectively. The air barrier installation has continued to the exterior of the second floor. Exterior window installation on the second floor has continued and the install of the interior aluminum storefront frames has begun.

Schedule Status

In the upcoming month, the project will begin several building milestones with the start of interior paint, acoustical ceiling grid and exterior plaster. The project is currently on schedule with construction to be completed late fall 2017 and move-in scheduled in the winter and open for spring 2018.



First Floor Classrooms Taping Progress



Channel Glass Installation at the Stairwell

PROJECT STATUS REPORT

June 2017 ♦ Issue 18

San Luis Obispo Instructional Building



Exterior Progress from the Southeast Corner



Second Floor Window & Frame Installation



Hoisting of HVAC Units on the Roof

PROJECT STATUS REPORT

June 2017 ♦ Issue 18



SAN LUIS OBISPO COUNTY COMMUNITY COLLEGE DISTRICT

North County Campus Center

Project Overview

The new Cuesta College North County Campus Center Building will be a 43,000 square foot, two-story structure. It will house the various programs and offices displaced by the removal of non-compliant modular buildings. The demolition of these modular buildings has been completed in preparation for the new Campus Center Building. The project delivery method is CM Multi-Prime and contains thirteen trade bid packages.

Project Progress

In the month of June the contactors completed the exterior framing and sheathing at the two exterior stair locations and continued to install insulation and drywall on the 1st and 2nd floors. The installation of the single ply roofing underlayment, tapered insulation and single ply membrane at the main flat roof has commenced. Plumbing, Electrical and HVAC Contractors continue with their rough-in work. Window installation including sheet metal and flashing has begun on the 1st floor and will continue through July.

Schedule Status

In the upcoming month, the contractor will begin roofing the high metal roof over the Main Entry. The project is currently on schedule with construction to be completed late fall 2017 and move-in scheduled in the winter and open for spring 2018.



Exterior Framing and Sheathing at Stair 2



Drywall in Progress



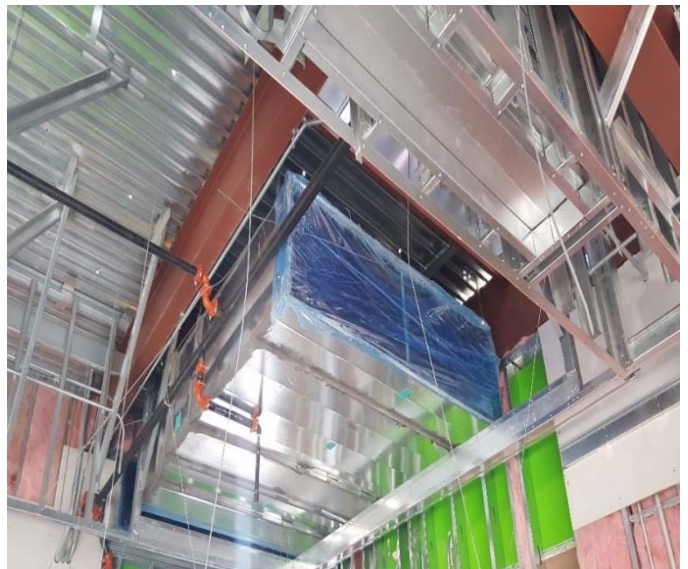
Exterior Framing and Sheathing at Stair 2



Window Installation on 1st Floor



Insulation



Ductwork in Progress