

**San Luis Obispo  
Instructional Building**

---

**Project Overview**

The new Instructional Building on the San Luis Obispo campus will be a 32,000 square foot, two-story structure. The first floor of the building will be comprised of eight high-capacity multi-discipline classrooms capable of serving up to 50 students each. It will also have one forum size classroom with a full capacity of 80 students. The second floor of the structure will consist of more than 40 offices, a staff lounge area and three meeting rooms. Construction commenced on April 11, 2016 with an anticipated completion date in the fall of 2017.

**Project Progress**

During the month of May, interior wall insulation was completed and drywall installation commenced. The first floor weather barrier also started around the exterior of the first floor. Metal framing continues on the first and second floor and is approximately 90% and 80% complete respectively and MEP rough-in is approximately 70% complete. Exterior windows on the second floor have commenced and the elevator was delivered earlier this month and installation is approximately 60% complete.

**Schedule Status**

In the upcoming month, the contractors will complete the weather barrier, a major project’s milestone. Interior metal framing and drywall will continue throughout the month leading to the start of interior finishes early next month. The project is currently on schedule with construction to be completed late fall 2017 and move-in scheduled in the winter and open for spring 2018.



HVAC Equipment in the First Floor Ceiling



Exterior Columns with Sheathing in Place

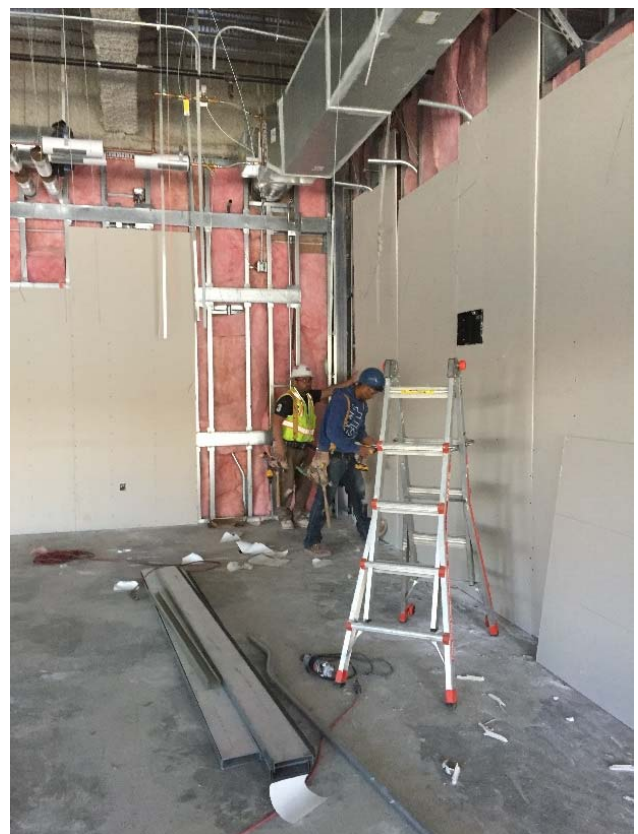
**San Luis Obispo  
Instructional Building**



Exterior Progress from the Northwest Corner



Second Floor Window Installation



Insulation and Drywall Installation

**Project Overview**

The new Cuesta College North County Campus Center Building will be a 43,000 square foot, two-story structure. It will house the various programs and offices displaced by the removal of non-compliant modular buildings. The demolition of these modular buildings has been completed in preparation for the new Campus Center Building. The project delivery method is CM Multi-Prime and contains thirteen trade bid packages.

**Project Progress**

During the month of May, the MEP Contractors continued to hang HVAC ductwork, install pipe and duct supports, run conduit and set boxes, and install plumbing and drain lines throughout the building. Interior and exterior framing also continued throughout the month and the exterior sheathing and weather barrier installation commenced. Earlier this month, the contractors started site work for the new entry approach on Dallons Drive. Lastly, the roofing material was delivered onsite and installation will start the first week of June.

**Schedule Status**

In the upcoming month, the contractors will continue with the installation of the exterior sheathing and weather barrier. Installation of the Single Ply and Metal Roofing will commence early next month. Window installation will begin towards the middle of the month followed by the start of lath and plaster on the exterior of the building. The project is currently on schedule with construction scheduled to be complete late fall 2017 and move-in scheduled in the winter and open for spring 2018.



Welded Chilled Water Lines



Exterior Sheathing



Exterior Sheathing



Weather Barrier