

**San Luis Obispo  
Instructional Building**

---

**Project Overview**

The new Instructional Building on the San Luis Obispo campus will be a 32,000 square foot, two-story structure. The first floor of the building will be comprised of eight high-capacity multi-discipline classrooms capable of serving up to 45 students each. It will also have one forum size classroom with a full capacity of 90 students. The second floor of the structure will consist of more than 40 offices, a staff lounge area and three meeting rooms. Construction commenced on April 11, 2016 with an anticipated completion date in the fall of 2017.

**Project Progress**

Throughout the month of February, contractors have continued to make progress on the work on the roof deck in preparation to start the roofing installation. The HVAC contractor hoisted and placed the AC unit curbs onto the roof and the concrete pads and curbs were poured. Within the building, the fire sprinkler rough-in is approximately 90% complete, wall framing commenced on the first floor and exterior infill framing is 95% complete. The MEP contractors have begun to rough in the conduit and piping on the first and second floors as well as stubbing up into the deck in preparation for roofing.

**Schedule Status**

In the upcoming month, contractors will complete the work on the roof deck so that roofing can begin. The project team continues to make progress towards waterproofing the building, an important milestone in the project’s schedule. The project is currently on schedule with construction to be completed late fall 2017 and move-in scheduled in the winter and open for spring 2018.



AC Unit Concrete Pads and Curbs on the Roof



Roof Hatch

**San Luis Obispo  
Instructional Building**



Exterior Framing Progress on the Southside of the Building



Aluminum Angles for Exterior Shadefins



First Floor Fire Sprinkler Piping Rough-In

**Project Overview**

The new Cuesta College North County Campus Center Building will be a 43,000 square foot, two-story structure. It will house the various programs and offices displaced by the removal of non-compliant modular buildings. The demolition of these modular buildings has been completed in preparation for the new Campus Center Building. The project delivery method is CM Multi-Prime and contains thirteen trade bid packages.

**Project Progress**

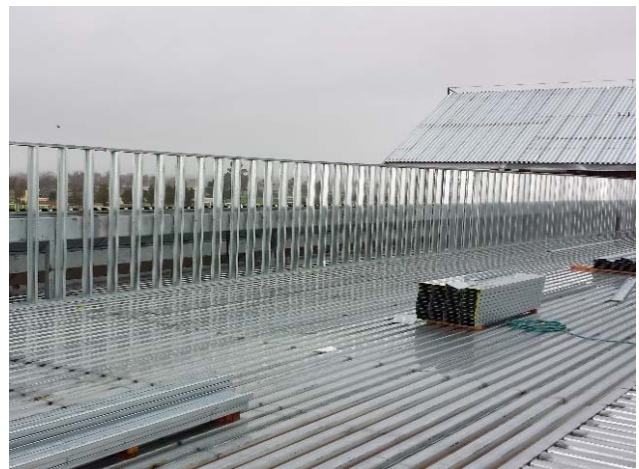
The Concrete Contractor began the month with stripping the formwork for the second floor deck and started to form the exterior wall curbing. The first set of concrete perimeter curbs were poured on Friday, February 24th. The Metal Decking Contractor continued to install decking at the high roof and the Framing Contractor is starting the interior wall layout on the first and second floors while working on the parapet framing at the roof and skylight.

**Schedule Status**

In the upcoming month, the Concrete Contractor will complete the concrete curb installation at the first and second floors. The Structural Steel Contractor will install the exterior stairs and trellis and the Fire Sprinkler Contractor will begin with installation of the main line. The project is currently on schedule with construction scheduled to be complete late fall 2017 and move-in scheduled in the winter and open for spring 2018.



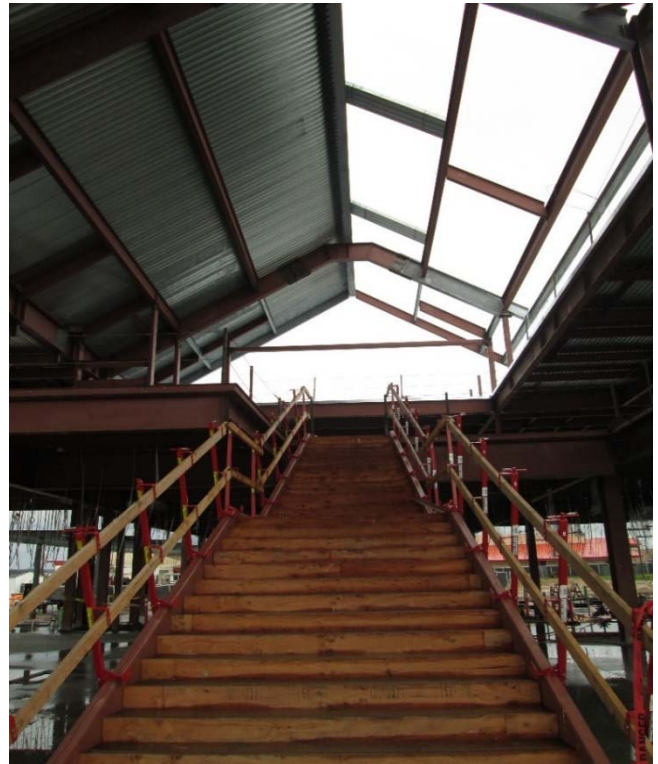
Second Floor Concrete Deck



Roof Parapet Framing



Formwork for Perimeter Curbs



Main Entry Stairs



Layout for Interior Wall Framing



Decking at High Roof