

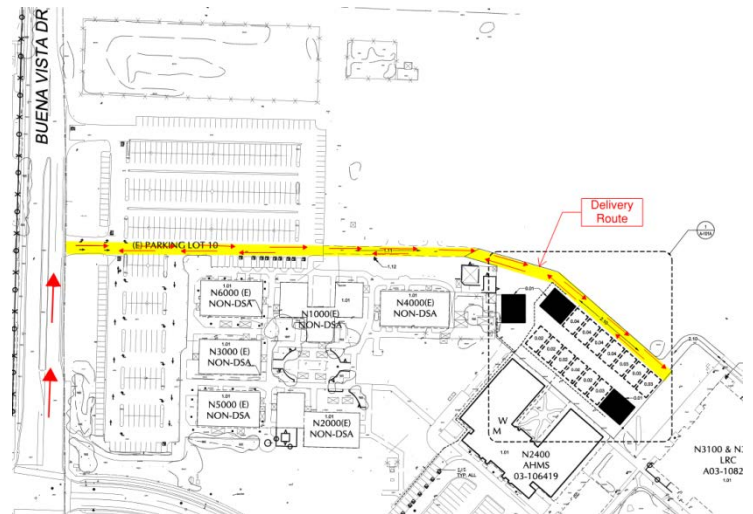


UPDATES & ACTIVITIES THAT MAY IMPACT
CAMPUS OPERATION
Week of June 15, 2015

NORTH COUNTY CAMPUS

Work this week: Started delivery of the portables June 8th and will continue through the end of June 2015. The delivery trucks will enter the parking lot from Buena Vista Dr., turnaround within the project site and exit through the same parking lot. The electrical and low voltage work has begun within the portables onsite.

- Access:** No access to fenced off area
- Noise:** Minor equipment noise
- Parking:** None
- Utilities:** None
- Odors:** None
- Dust:** Minor impact.



SLO CAMPUS

Work this week: Temporary fencing has been installed this week. Subgrade will start at the Public Safety Portable (Area 3) with underground utilities following. Saw-cutting and demo activities will begin for the ADA parking stalls (Area 1) as well.

Access:	No restrictions
Noise:	Minor equipment noise
Parking:	None
Utilities:	None
Odors:	None
Dust:	Minor

