

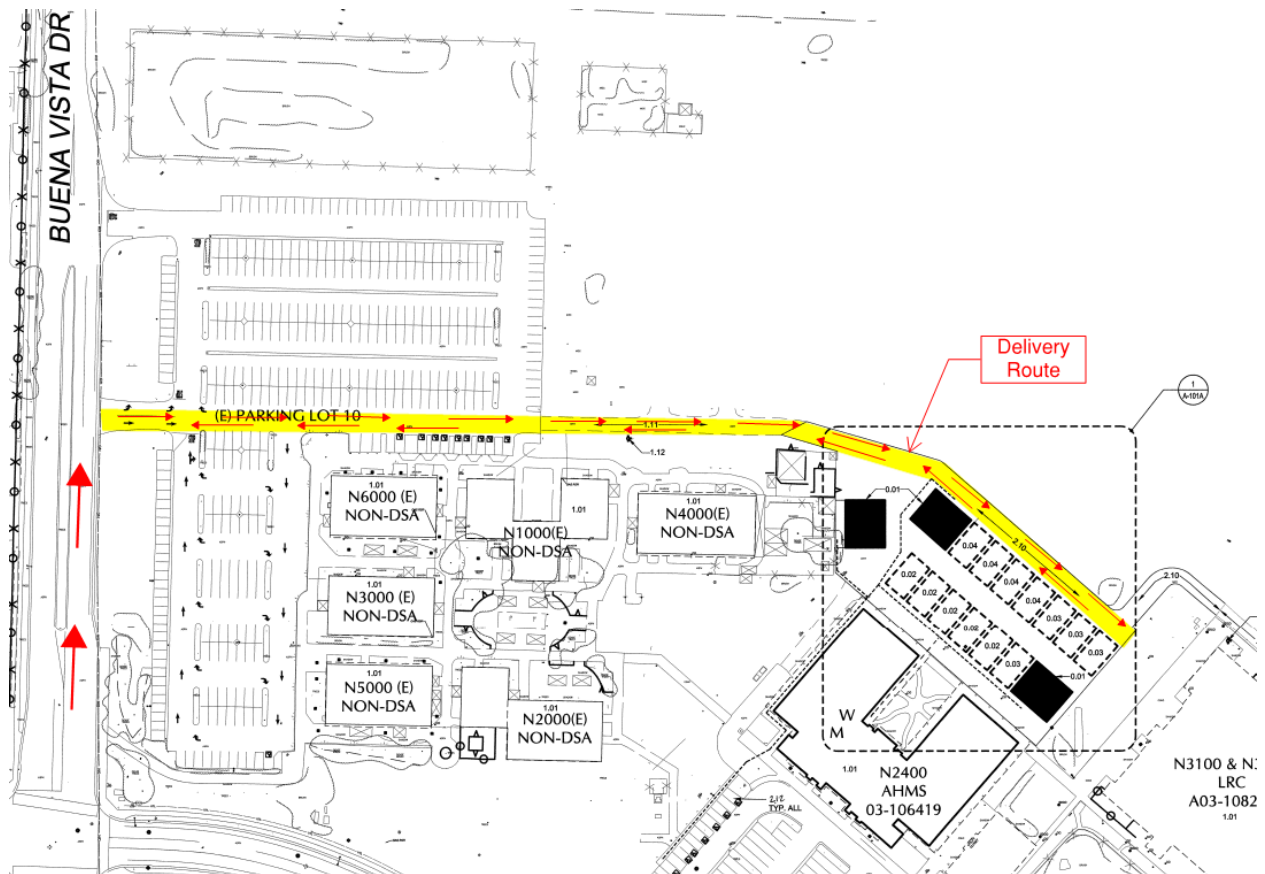


**UPDATES & ACTIVITIES THAT MAY IMPACT**  
**CAMPUS OPERATION**  
*Week of June 8, 2015*

**NORTH COUNTY CAMPUS**

**Work this week:** Underground utilities and building pad complete. Start delivery of portables and will continue through June 2015. The delivery trucks will enter the parking lot from Buena Vista Dr., turnaround within the project site and exit through the same parking lot.

- Access:** No access to fenced-off area
- Noise:** Minor equipment noise
- Parking:** None
- Utilities:** None
- Odors:** None
- Dust:** Minor impact.



**SLO CAMPUS**

**Work this week:** Temporary fencing installed this week. Subgrade will start at the Public Safety Portable with underground utilities following.

|                   |                       |
|-------------------|-----------------------|
| <b>Access:</b>    | No restrictions       |
| <b>Noise:</b>     | Minor equipment noise |
| <b>Parking:</b>   | None                  |
| <b>Utilities:</b> | None                  |
| <b>Odors:</b>     | None                  |
| <b>Dust:</b>      | Minor                 |

