

PROJECT STATUS REPORT

April 2020 ♦ Issue 52

R&B Shultz Early Childhood Education Center

Project Overview

Currently, the North County Campus’s Early Childhood Education program is located in portable buildings. The high-demand program offers both childcare services and lecture courses. The new one-story R & B Shultz Early Childhood Education Center will continue to provide two levels of childcare (toddler and preschool) and include faculty offices, additional parking adjacent to the new structure and dedicated teaching spaces related to early childhood education. The drawings were approved by the Division of the State Architect on January 30, 2018 and was awarded as a single General Contractor project to AMG & Associates, Inc. on December 6, 2018. Construction commenced on January 2, 2019 with an anticipated completion date in the Fall of 2020.

Project Progress

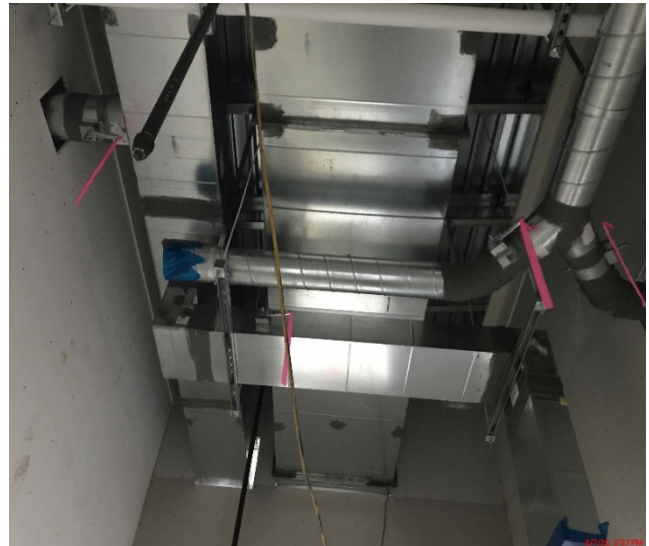
During the month of April, the contractor continued with the installation of insulation, drywall and ductwork. A mock-up of the window installation is nearly complete and ready for approval by the Architect, after which the contractor will proceed with the installation of all exterior window frames. The new concrete pad for the building’s main electrical equipment was poured and the curbs for the HVAC equipment at the roof mechanical well is nearly complete.

Project Schedule

In the upcoming month, interior drywall and insulation will continue as well as the installation of exterior windows. Following the window installation, the contractor will begin the installation of the exterior lath and plaster system. The overall project remains on schedule to complete in fall of 2020.



Insulation Installation Progress



Ductwork Progress

R&B Shultz Early Childhood Education Center



Electrical Equipment Pad



HVAC Equipment Curb Installation Progress



Ductwork Progress



Window Mock-Up