

# PROJECT STATUS REPORT

December 2019 ♦ Issue 48

## SLO Data Center

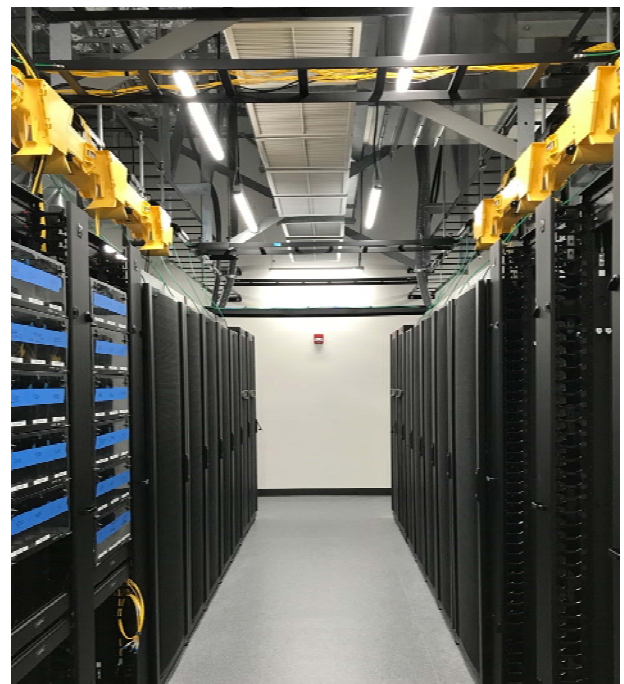
---

### Project Overview

The San Luis Obispo Campus new Data Center will be an approximately 4,400 square foot, one-story building. The building will consist of thirteen offices, break room, restrooms, and machine room which will be the new central hub for Cuesta's IT systems. The Data Center drawings were approved by the Division of the State Architect on March 8, 2018 and was awarded as a single General Contractor project to AMG & Associates, Inc. on September 5, 2018. Construction commenced on September 24, 2018 with an anticipated completion date in the fall of 2019.

### Project Progress

The building is now substantially complete and all furniture is installed. During the month of December, the contractor worked to complete the punch lists items and turned over all the closeout documents to the District for review and acceptance. Towards the end of December, the District's IT Department will be moving over the Data Center equipment from the existing server rooms in building 3300/3400 and switching over all network services. Early in the New Year, all personnel moves into the Data Center will be complete and the building will be fully staffed and operational.



# PROJECT STATUS REPORT

December 2019 ♦ Issue 48

## SLO Fiber Star

---

### Project Overview

The San Luis Obispo Campus is undergoing installation of new and upgraded telecommunication systems and pathways. The Fiber Star project consists of installing new underground conduit throughout portions of the campus and pulling new fiber to the existing data racks within various buildings. Construction on this project commenced on September 9<sup>th</sup>, 2019 and is anticipated to be complete by the end of the 2019 calendar year.

### Project Progress

During the month of December, the contractor has finished splicing and terminating fiber optics in the new Data Center as well as several buildings around campus.

### Schedule Status

The project is currently scheduled with construction to be completed by the end of December 2019.



Fiber Runs terminated in the new Data Center



# PROJECT STATUS REPORT

December 2019 ♦ Issue 48

## Electric Vehicle (EV) Charging Stations – SLO and North County Campuses

---

### Project Overview

The San Luis Obispo and North County Campuses are undergoing construction and installation of new Electric Vehicle (EV) charging stations. The location of the EV charging stations at the North County campus is in the center of Parking lot 11, and on the SLO campus at the North end of Parking lot 2A. This project commenced on September 9, 2019 and is anticipated to be complete by the end of the calendar year 2019.

### Project Progress

During the month of December, the contractor has finished install of charging stations on both campuses including the site restoration, parking stall striping and wheel stops.

### Schedule Status

The project is currently scheduled with construction to be completed by the end of December 2019.



EV Parking Stalls on the SLO Campus



EV Chargers installed on the  
North County Campus

# PROJECT STATUS REPORT

December 2019 ♦ Issue 48

## 2000's Complex HVAC & Roof Replacement

### Project Overview

The 2000 Complex Reroof and HVAC Replacement Project began in the Summer of 2019 with all work complete in the Summer of 2020. The project includes new roofing and new HVAC units for the 2100, 2200, 2300 and 2400 buildings. The work is being completed in phases to minimize the impacts to the District.

### Project Progress

During the month of December, the contractor installed the new roof membrane and fixtures on the 2300 building as well as set the new HVAC equipment and completed the termination of the building controls system.



### Project Schedule

Programming and setup of the HVAC for building 2300 will continue into January and is on schedule to be complete early spring 2020. New HVAC for the 2100, 2200 and 2400 building is scheduled to begin late-December 2019. The final phase of the project will be the reroof for the 2200 building during summer 2020.



New HVAC and Roofing on the 2300 Building



# PROJECT STATUS REPORT

December 2019 ♦ Issue 48

## 2000's Complex ADA Upgrades

---

### Project Overview

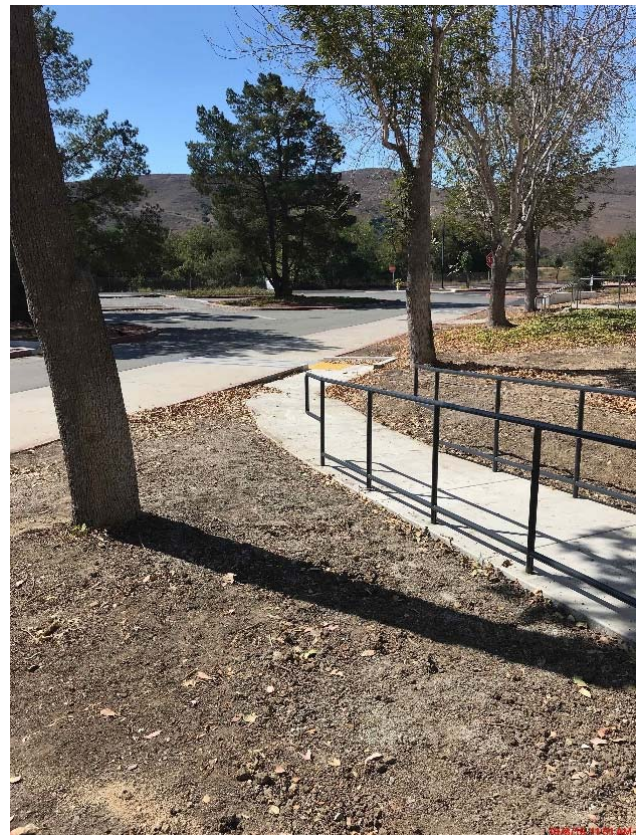
The 2000 Complex ADA Upgrades project will resolve ADA deficiencies throughout the 2000 complex. The project will correct the slope of the path of travel around the 2000 complex, add a required ADA ramp on the east side of 2300, add an ADA ramp on the east side of 2500 to new accessible parking stalls, update restrooms throughout the 2000 Complex, and update drinking fountains to new bottle fill station with accessible fountains. Construction began in August 2019 and is expected to complete by December 2019.

### Project Progress

During the month of December, the contractor completed the ADA upgrades in the restrooms and installed all new signage throughout the 2000 complex.

### Project Schedule

The project is now complete. The contractor will be transmitting all closeout documents to the district for review and acceptance.



# PROJECT STATUS REPORT

December 2019 ♦ Issue 48

## R&B Shultz Early Childhood Education Center

---

### Project Overview

Currently, the North County Campus's Early Childhood Education program is located in portable buildings. The high-demand program offers both childcare services and lecture courses. The new one-story R & B Shultz Early Childhood Education Center will continue to provide two levels of childcare (toddler and preschool) and include faculty offices, additional parking adjacent to the new structure and dedicated teaching spaces related to early childhood education. The drawings were approved by the Division of the State Architect on January 30, 2018 and was awarded as a single General Contractor project to AMG & Associates, Inc. on December 6, 2018. Construction commenced on January 2, 2019 with an anticipated completion date in the Fall of 2020.

### Project Progress

During the month of December, the contractor continued with the installation of interior metal framing and metal roof decking, which should be complete in the upcoming weeks. Wood nailer installation is complete. Exterior sheathing, densarmor and sure-board installation will continue into January. The contractor is also working on the installation of hangers, wall track and mechanical, electrical, plumbing, and fire sprinkler (MEP) rough-in.

### Project Schedule

In the upcoming month, interior building framing and exterior skin elements will continue. The contractor will begin drying in the roof. Interior MEP rough-in will continue, as will exterior underground utilities and grading. The overall project remains on schedule to complete in fall of 2020.



Front Entry Framing and Sheathing Progress



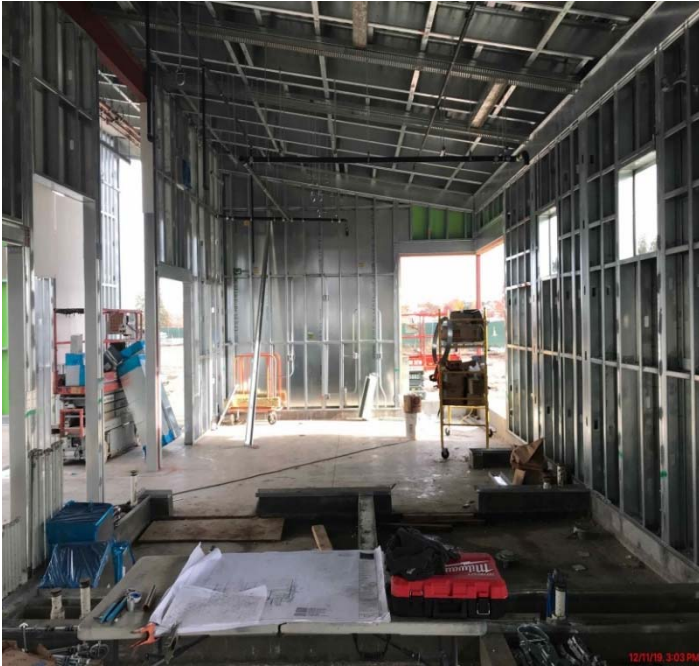
Wood Nailer Installation Complete



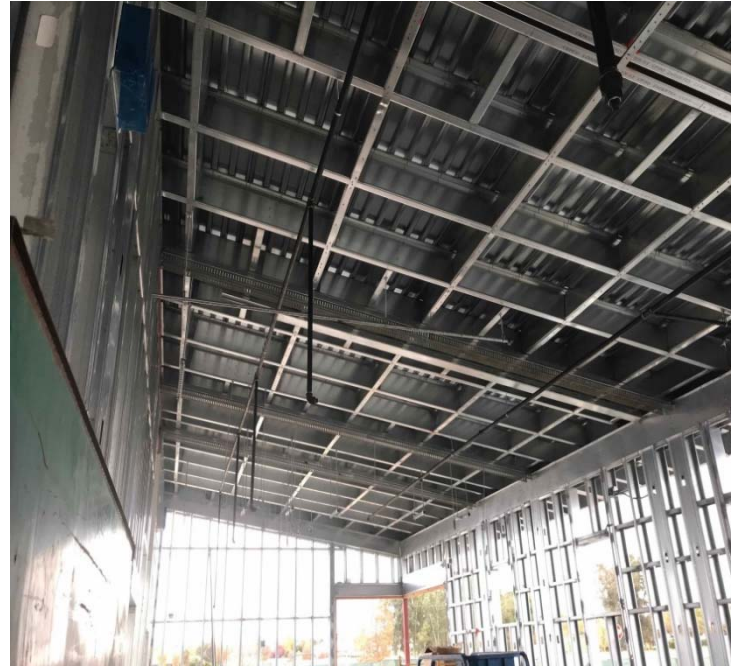
# PROJECT STATUS REPORT

December 2019 ♦ Issue 48

## R&B Shultz Early Childhood Education Center



Interior Framing/Decking/Sheathing Progress



Metal Decking Progress



Exterior Sheathing Progress



MEP Rough-in Progress