

Project Overview

The San Luis Obispo Campus new Data Center will be an approximately 4,400 square foot, one-story building. The building will consist of thirteen offices, break room, restrooms, and machine room which will be the new central hub for Cuesta’s IT systems. The Data Center drawings were approved by the Division of the State Architect on March 8, 2018 and was awarded as a single General Contractor project to AMG & Associates, Inc. on September 5, 2018. Construction commenced on September 24, 2018 with an anticipated completion date in the fall of 2019.

Project Progress

During the month of September, the exterior of the building was completed, including roof tiles, doors, windows, and plaster. HVAC units were installed on the roof, and rough grading for exterior flatwork was completed. Interior to the building, the majority of the HVAC system was put into place as well as doors, hardware, and painting. MEP connections to HVAC units and interior trim out are nearing completion.

Project Schedule

In the upcoming month, the General Contractor will complete the interior finishes, set and mount the IT racks in the machine room and install the remaining flatwork and landscaping/irrigation around the building. IT equipment will begin installation next month. The project is still on schedule with construction to be complete in Fall 2019 and open for Spring 2020. The project is preparing for its interface with the Fiber Star project which is underway.



Data Center Exterior – Plaster, Windows, Roof Tile, Rough Grading



Crane Installation of HVAC Units on the Roof.



Exterior Concrete Flatwork Installation

Fiber Star

Project Overview

The San Luis Obispo Campus is undergoing installation of new and upgraded telecommunication systems and pathways. The Fiber Star project consists of installing new underground conduit throughout portions of the campus and pulling new fiber to the existing data racks within various buildings. Construction on this project commenced on September 9th, 2019 and is anticipated to be complete by the end of the 2019 calendar year.

Project Progress

During the month of September the contractor began underground work around various vaults throughout the West side of the campus. Directional boring for installation of new conduits has also begun.

Schedule Status

In the upcoming month, the contractor will continue underground electrical work throughout the campus. The project is on schedule with construction expected to be complete by the end of 2019.



Directional Boring for New Conduit Installation



New Underground Conduits into Existing Vaults

**Electric Vehicle (EV)
Charging Stations – SLO and
North County Campuses**

Project Overview

The San Luis Obispo and North County Campuses are undergoing construction and installation of new Electric Vehicle (EV) charging stations. The location of the EV charging stations at the North County campus is in the center of Parking lot 11, and on the SLO campus at the North end of Parking lot 2A. This project commenced on September 9, 2019 and is anticipated to be complete by the end of the calendar year 2019.

Project Progress

During the month of September the contractor has mobilized on the North County campus and begun demo and trenching activities for the underground electrical lines. At the SLO campus, PG&E has begun underground work from the power pole to the new transformer.

Schedule Status

In the upcoming month, the contractor will continue underground electrical work at the North County and SLO campuses in preparation for the EV charging station installation. The project is currently on schedule with construction expected to be complete by the end of 2019.



North County Campus Mobilization



Trenching and Conduit Installations

**SLO Campus 12KV Primary
Equipment Replacement**

Project Overview

The San Luis Obispo Campus 12KV Primary equipment replacement project will replace the current outdated main electrical gear that interfaces with PG&E and services the entire campus. It will consist of a new concrete pad, new conduits, new transformers and new switchgear. The job was awarded to Santa Maria Electric on April 3, 2019. The project is scheduled to be completed no later than January 14, 2020.

Project Progress

During the month of September, the contractor completed the primary conduit installation, slurry and back fill at the new equipment pad. The August 25th shutdown was a success and the investigative and preliminary work was completed as scheduled.

Schedule Status

The project received an early start for the preliminary work and is currently on schedule to complete with the campus wide shutdown on December 26th-30th, 2019.



New Conduit and Slurry Installation



Conduit Install at New
Equipment Pad Location

**2000's Complex HVAC &
Roof Replacement**

Project Overview

The 2000 Complex Reroof and HVAC Replacement Project (Phase 1) began in the Summer of 2019 and will complete in the Fall of 2019. The work to be completed during phase 1 is the demolition of the existing roofs and the installation of new roofing on the 2100 and 2400 buildings. The complete phased project will re-roof the 2100, 2200, 2300, and 2400 buildings, as well as replace the HVAC units. These phases will continue until completion in August of 2020. Work is being performed at night to minimize impacts to the campus.

Project Progress

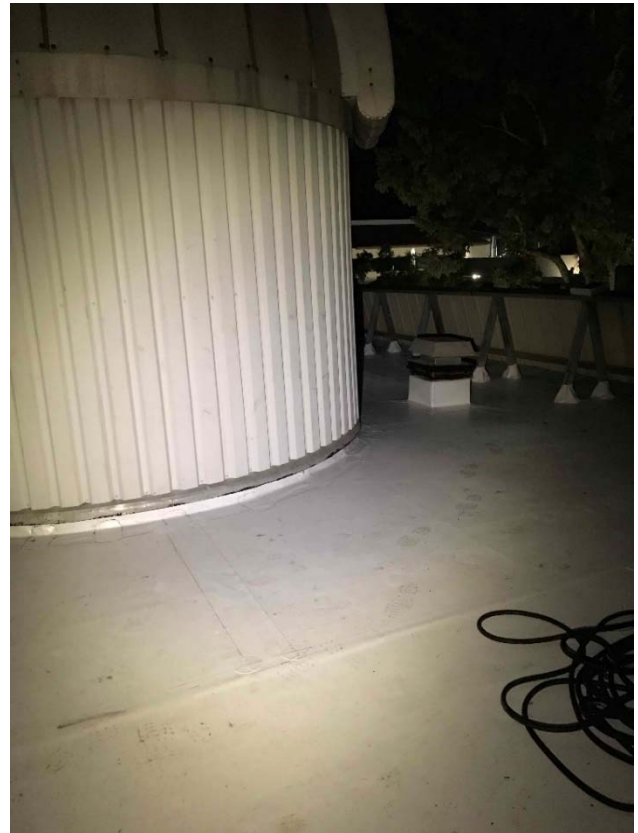
During the month of September, the contractor crews completed new roofing on the 2400 building and completed demolition on the 2100 building. New roofing on building 2100 has begun and will be complete by the end of September. The project will then shift to building 2300 for demolition and roofing.

Project Schedule

Phase 2 is scheduled to begin upon completion of Phase 1 and includes the complete re-roof and HVAC replacement of the 2200 and 2300 buildings. The project is currently on schedule.



New Roofing at Building 2400



New Roofing at Building 2100

**2000's Complex ADA
Upgrades**

Project Overview

The 2000 Complex ADA Upgrades project will resolve ADA deficiencies throughout the 2000 complex. The project will correct the slope of the path of travel around the 2000 complex, add a required ADA ramp on the east side of 2300, add an ADA ramp on the east side of 2500 to new accessible parking stalls, update restrooms throughout the 2000 Complex, and update drinking fountains to new bottle fill station with accessible fountains. Construction began in August 2019 and is expected to complete by December 2019.

Project Progress

During the month of September, the contractor has completed abatement work, demolition and installation of new water closets in building 2300. New handrails have been installed throughout the 2000 complex, and new power operators for restroom doors have been completed at bldg. 2500.

Project Schedule

Concrete flatwork, along with additional restroom and drinking fountain work will continue into the next month. The project is currently on schedule to complete by December 2019.



New Drinking Fountain Installation



Restroom ADA Upgrades

**R&B Shultz Early
Childhood Education Center**

Project Overview

Currently, the North County Campus’s Early Childhood Education program is located in portable buildings. The high-demand program offers both childcare services and lecture courses. The new one-story R & B Shultz Early Childhood Education Center will continue to provide two levels of childcare (toddler and preschool) and include faculty offices, additional parking adjacent to the new structure and dedicated teaching spaces related to early childhood education. The drawings were approved by the Division of the State Architect on January 30, 2018 and was awarded as a single General Contractor project to AMG & Associates, Inc. on December 6, 2018. Construction commenced on January 2, 2019 with an anticipated completion date in the Fall of 2020.

Project Progress

During the month of September, the general contractor installed the foundations and slab at the storage buildings, installed underground storm drain utilities at the playground area, continued work on the building framing, began the electrical rough-in at the building, and completed and released the parking lot for District use.

Project Schedule

In the upcoming month the exterior and interior building framing will continue. Exterior skin elements will also begin installation. Interior MEP rough-in will continue, as will exterior underground utilities and grading. The overall project remains on schedule to complete in fall of 2020.



New Parking Lot Complete

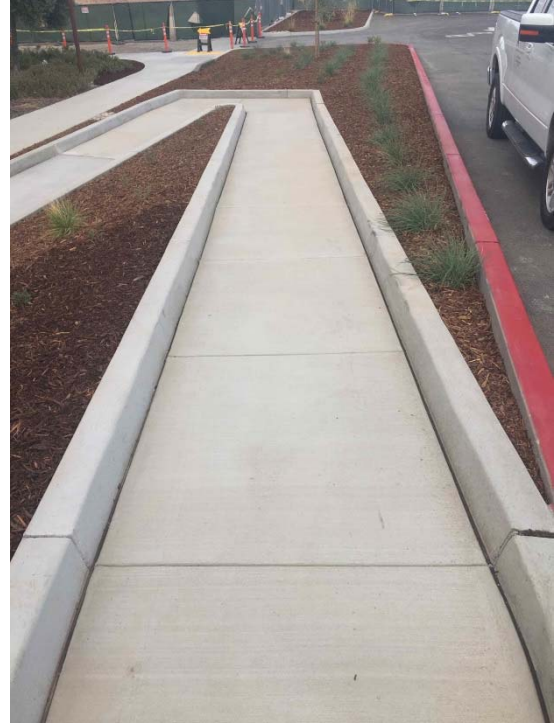


Metal Framing at ECE Building

R&B Shultz Early Childhood Education Center



Parking Lot Stairs & Railing



Parking Lot Concrete ADA Ramp



New Storage Building Slab & Curbs



Exterior High Roof Framing