

**San Luis Obispo  
Instructional Building**

---

**Project Overview**

The new Instructional Building on the San Luis Obispo campus will be a 32,000 square foot, two-story structure. The first floor of the building will be comprised of eight high-capacity multi-discipline classrooms capable of serving up to 50 students each. It will also have one forum size classroom with a full capacity of 80 students. The second floor of the structure will consist of more than 40 offices, a staff lounge area and three meeting rooms. Construction commenced on April 11, 2016 with an anticipated completion date in the fall of 2017.

**Project Progress**

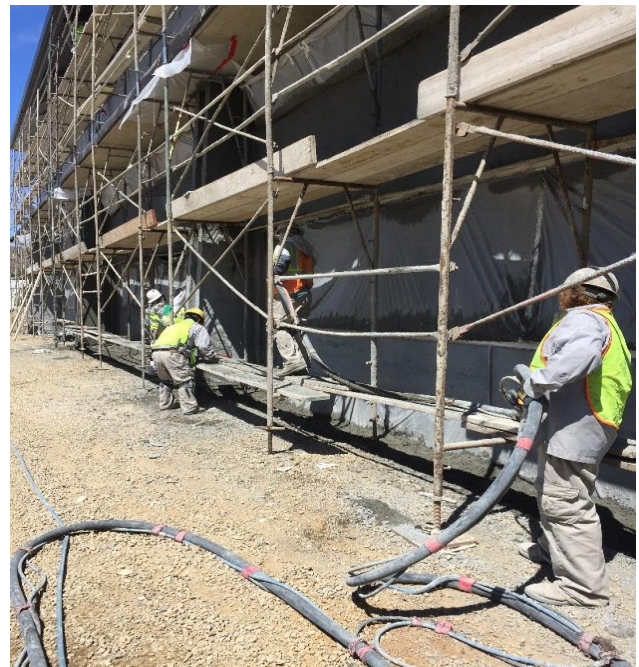
During the month of July, the air barrier has been completed, the initial coat of paint has been applied in the first floor classrooms, lath and metal has been completed on the exterior, and plaster coatings are being applied to the outside of the building. The contractors continue on the second floor interior with framing, insulation, and drywall taping. On the roof, the boilers and pumps have been installed allowing the roofing contractor to start installing the clay tiles. Above-ceiling work is in progress with seismic bracing of the duct work.

**Schedule Status**

In August the project will continue to see progress on the roof, the exterior plaster, and ceilings. The project is currently on schedule with construction to be completed in the late fall 2017 with move-in scheduled in the winter and open for spring 2018.



Second Floor Corridor Wall Progress



Beginning of Plaster Installation

**San Luis Obispo  
Instructional Building**

---



Roof Tile Installation



Installation of Metal Lath



Plaster Installation Progress



### **Project Overview**

The new Cuesta College North County Campus Center Building will be a 43,000 square foot, two-story structure. It will house the various programs and offices displaced by the removal of non-compliant modular buildings. The demolition of these modular buildings has been completed in preparation for the new Campus Center Building. The project delivery method is CM Multi-Prime and contains thirteen trade bid packages.

### **Project Progress**

In the month of July the single ply roof over the cafeteria was completed. The contractors continue the installation of the plumbing, electrical, HVAC, control, fire sprinkler, alarm, audio visual, and access control systems. The interior work is progressing with the installation of insulation, drywall, windows, and door frames. Site-work has started with the parking lot expansion and concrete curbs. Late in the month the exterior plaster work began.

### **Schedule Status**

In the upcoming month, contractors will continue with their work inside and out; including painting, drywall, insulation, windows and door frames, exterior plaster, parking lot, and road construction joining parking lots. The project is currently on schedule with construction to be completed late fall 2017 with move-in scheduled in the winter and open for spring 2018.



Main Entry - Interior



Main Entry - Exterior



Exterior with Storefront Windows Installed



New Roadway Connecting Parking Lot 10 and 11