

**San Luis Obispo
Instructional Building**

Project Overview

The new Instructional Building on the San Luis Obispo campus will be a 32,000 square foot, two-story structure. The first floor of the building will be comprised of eight high-capacity multi-discipline classrooms capable of serving up to 50 students each. It will also have one forum size classroom with a full capacity of 80 students. The second floor of the structure will consist of more than 40 offices, a staff lounge area and three meeting rooms. Construction commenced on April 11, 2016 with an anticipated completion date in the fall of 2017.

Project Progress

During the month of April, exterior sheathing commenced on the second floor and the painter started to paint the mansard beams and flashing. The aluminum door and window frames have been installed and windows are starting to go in on the first floor. Exterior framing is complete along with the building's fire water line which was installed, tested and backfilled this month.

Schedule Status

In the upcoming month, following the completion of the exterior sheathing and window installation, the contractors will start the installation of the water and air barrier, the project's next major milestone. The project is currently on schedule with construction to be completed late fall 2017 and move-in scheduled in the winter and open for spring 2018.



Second Floor Office Framing Progress



Installation of Waterproofing around Windows

**San Luis Obispo
Instructional Building**



Second Floor Progress



Building's Fire Water Line Connection



Exterior Sheathing and Window Install Progress

PROJECT STATUS REPORT

April 2017 ♦ Issue 16



SAN LUIS OBISPO COUNTY COMMUNITY COLLEGE DISTRICT

North County Campus Center

Project Overview

The new Cuesta College North County Campus Center Building will be a 43,000 square foot, two-story structure. It will house the various programs and offices displaced by the removal of non-compliant modular buildings. The demolition of these modular buildings has been completed in preparation for the new Campus Center Building. The project delivery method is CM Multi-Prime and contains thirteen trade bid packages.

Project Progress

Throughout the month of April, the framing contractor continued the interior and exterior framing and scaffold installation around the building. The MEP contractors continued with overhead rough-in and started the wall rough-in. The concrete contractor formed the roof top concrete pads and placed the concrete for pads this month in addition to placing the footings for the exterior stairs.

Schedule Status

In the upcoming month, the Framing Contractor will continue with the completion of the interior and exterior framing and the MEPs will continue with overhead and wall rough-in. The project is currently on schedule with construction scheduled to be complete late fall 2017 and move-in scheduled in the winter and open for spring 2018.



Scaffolding and Exterior Wall Framing



Forms for Rooftop Concrete Pads

PROJECT STATUS REPORT

April 2017 ♦ Issue 16

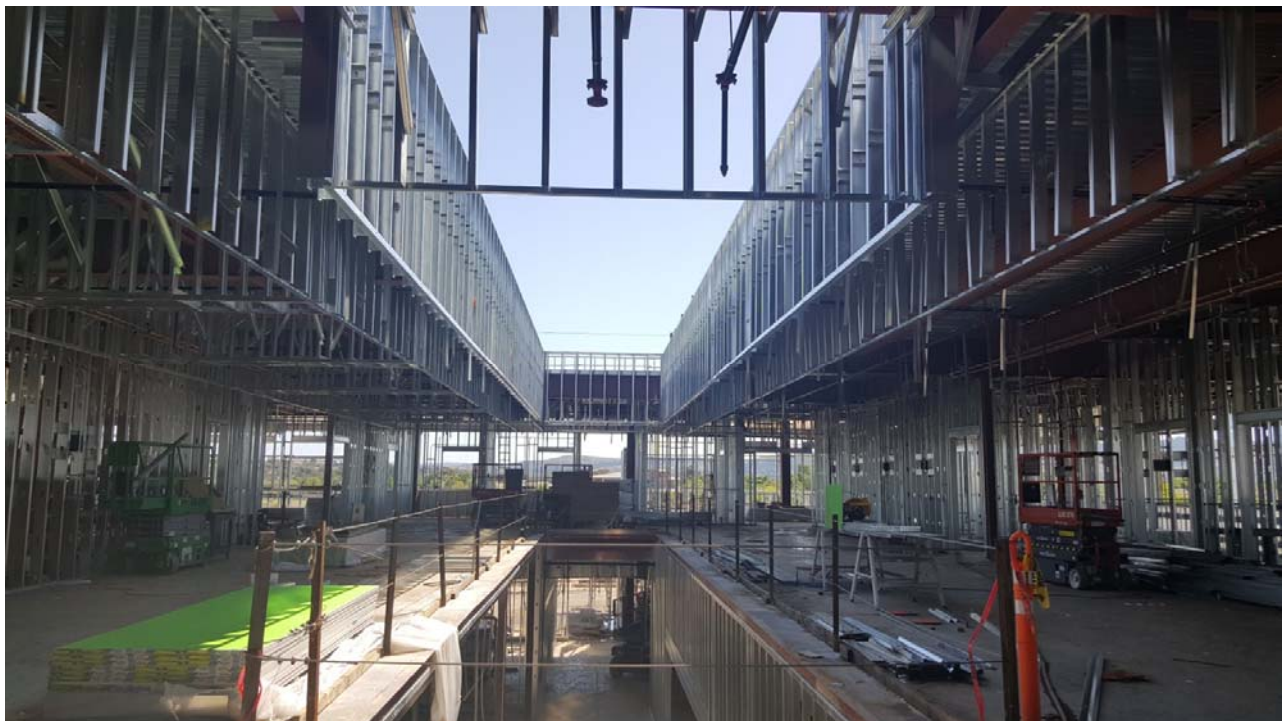


SAN LUIS OBISPO COUNTY COMMUNITY COLLEGE DISTRICT

North County Campus Center



Main Entrance



Soffit and Wall Framing for 2nd Floor Computer Lab and Offices



TOGETHER, BUILDING VALUE EVERY DAY.

