

PROJECT STATUS REPORT

March 2017 ♦ Issue 15

San Luis Obispo Instructional Building

Project Overview

The new Instructional Building on the San Luis Obispo campus will be a 32,000 square foot, two-story structure. The first floor of the building will be comprised of eight high-capacity multi-discipline classrooms capable of serving up to 50 students each. It will also have one forum size classroom with a full capacity of 80 students. The second floor of the structure will consist of more than 40 offices, a staff lounge area and three meeting rooms. Construction commenced on April 11, 2016 with an anticipated completion date in the fall of 2017.

Project Progress

Throughout the month of March, the MEP contractors have continued to rough-in conduits and piping on the second floor and the electrician has started pulling wires on the first floor. The wall framing continued throughout the first floor and the contractor has also started to install exterior wall sheathing on the first floor and frame the second floor walls. The steel contractor installed the exterior stair. Lastly, the roofing contractor began the installation of the single ply roofing and had loaded the building with the roof tile.

Schedule Status

In the upcoming month, contractors will continue with the roofing installation and exterior sheathing working towards the next major milestone of a watertight building. The project is currently on schedule with construction to be completed late fall 2017 and move-in scheduled in the winter and open for spring 2018.



First Floor MEP Component Installation



Sheathing at Exterior Walls

**San Luis Obispo
Instructional Building**



Framing and Sheathing Progress on the Southside of the Building



Installation of the Exterior Stairs



Single Ply Roofing Installation

PROJECT STATUS REPORT

March 2017 ♦ Issue 15



SAN LUIS OBISPO COUNTY COMMUNITY COLLEGE DISTRICT

North County Campus Center

Project Overview

The new Cuesta College North County Campus Center Building will be a 43,000 square foot, two-story structure. It will house the various programs and offices displaced by the removal of non-compliant modular buildings. The demolition of these modular buildings has been completed in preparation for the new Campus Center Building. The project delivery method is CM Multi-Prime and contains thirteen trade bid packages.

Project Progress

During the month of March, the Concrete Contractor completed the interior and exterior perimeter curbs. Also completed was the excavation, reinforcement and concrete placement for the Concrete Masonry Unit (CMU) wall footings. Towards the end of the month, the contractor started the CMU installation at the Equipment Yard and Fine Arts Patio. The Framing contractor continued with the interior wall framing and started working on the exterior wall framing. Fireproofing also commenced for both the first and second floors and will continue into next month. The exterior trellis work was completed and the MEP contractors have all commenced with the overhead rough-in.

Schedule Status

In the upcoming month, the Framing Contractor will continue with the completion of the interior and exterior framing and the MEPs will begin with the wall rough-in. The project is currently on schedule with construction scheduled to be complete late fall 2017 and move-in scheduled in the winter and open for spring 2018.



Interior Wall Framing



Exterior Wall Framing



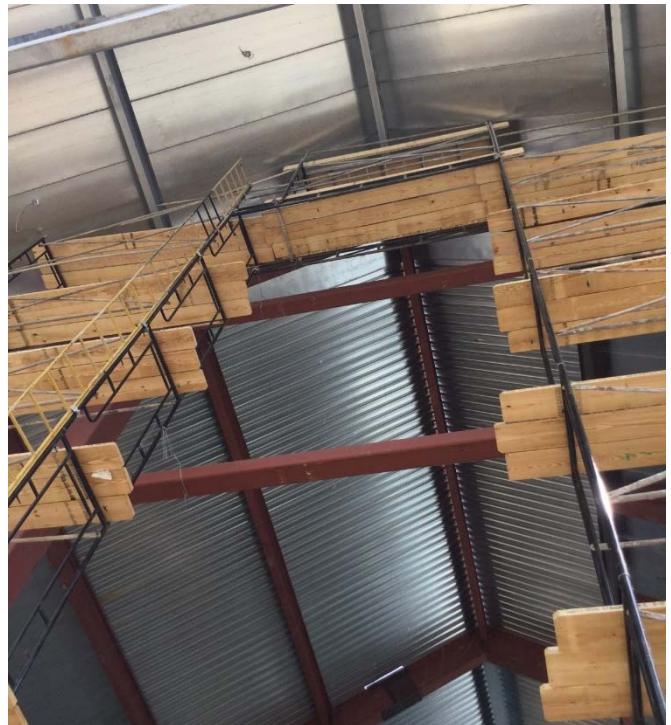
Completed Perimeter Curbs



Concrete Masonry Walls



Fireproofing Installation



Scaffolding at the High Roof