

# PROJECT STATUS REPORT

December 2016 ♦ Issue 12

## San Luis Obispo Instructional Building

---

### Project Overview

The new Instructional Building on the San Luis Obispo campus will be a 32,000 square foot, two-story structure. The first floor of the building will be comprised of eight high-capacity multi-discipline classrooms capable of serving up to 45 students each. It will also have one forum size classroom with a full capacity of 90 students. The second floor of the structure will consist of more than 40 offices, a staff lounge area and three meeting rooms. Construction commenced on April 11, 2016 with an anticipated completion date in the fall of 2017.

### Project Progress

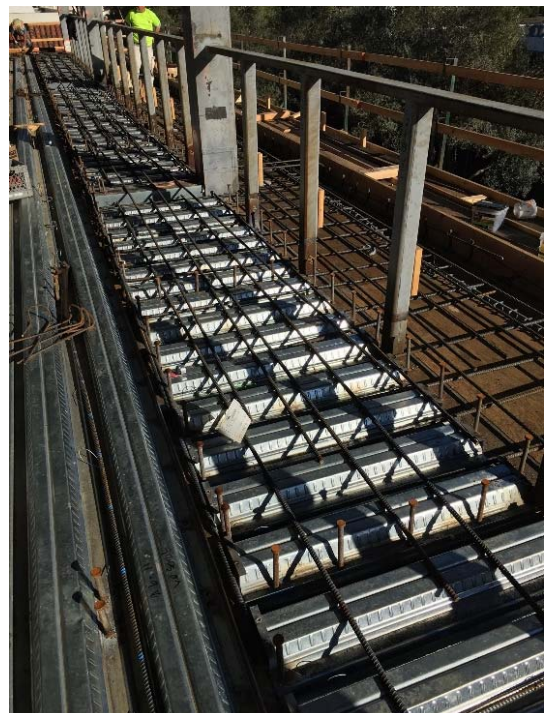
The mansard and roof decking has been completed. Exterior framing continued throughout the month and the roof parapet metal framing commenced. The MEP contractors completed the installation of their first floor ceiling inserts. The plumbing contractor installed the waste line for the second floor and the electrical contractor connected the building's transformer to the Campus's main switch gear. Rebar was installed on the second floor deck and the bathroom curbs were formed. The first section of second floor concrete deck was placed at the end of December and all section will be complete early January.

### Schedule Status

In the upcoming month, the concrete contractor will complete the placement of the second floor concrete deck and the framing will begin on the second floor. The project team continues to make progress towards waterproofing the building, an important milestone in the project's schedule. The project is currently on schedule with construction to be completed late fall 2017 and move-in scheduled in the winter and open for spring 2018.



Installation of Plywood and Rebar at the  
Cantilevered Deck



Rebar Installation at the Second Floor and  
Cantilevered Deck



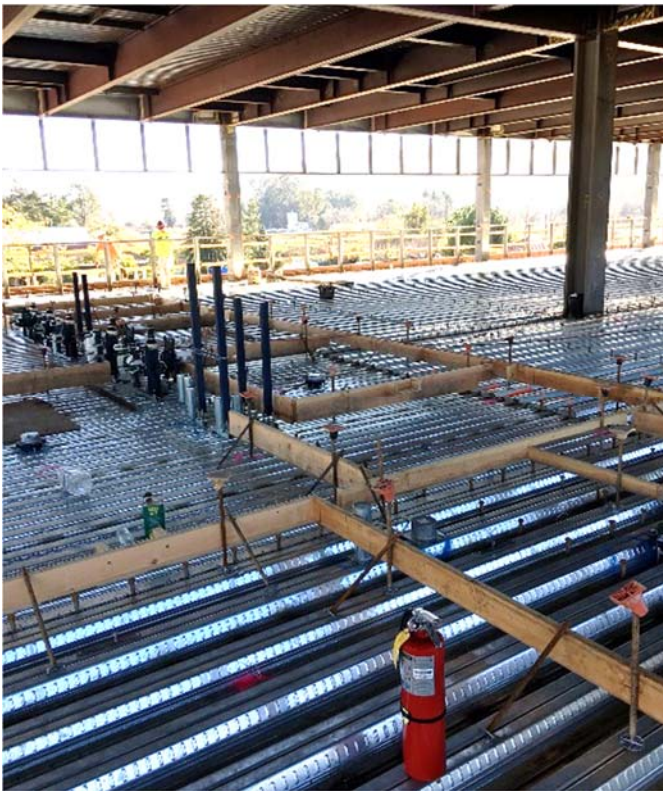
# PROJECT STATUS REPORT

December 2016 ♦ Issue 12

## San Luis Obispo Instructional Building



Installation of Shoring for Cantilever Deck



2<sup>nd</sup> Floor Bathroom Curbs & Rough Plumbing



MEP Deck Inserts



# PROJECT STATUS REPORT

December 2016 ♦ Issue 12

## Project Overview

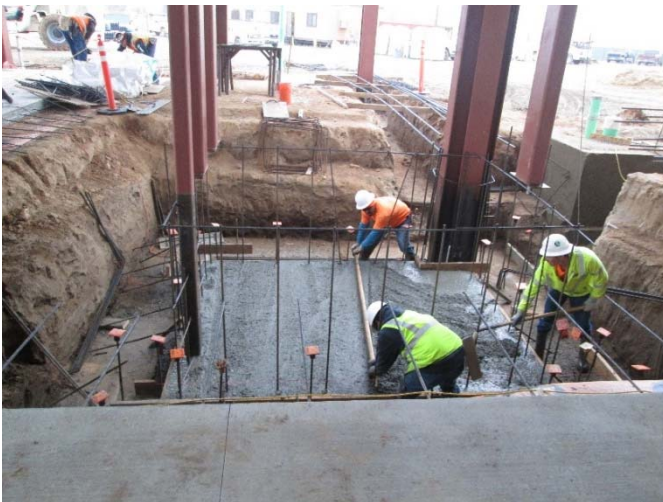
The new Cuesta College North County Campus Center Building will be a 43,000 square foot, two-story structure. It will house the various programs and offices displaced by the removal of non-compliant modular buildings. The demolition of these modular buildings has been completed in preparation for the new Campus Center Building. The project delivery method is CM Multi-Prime and contains thirteen trade bid packages.

## Project Progress

Throughout the month, the Structural Steel Contractor has been completing the welds for the steel beam connections. The mansard framing was completed and the mansard decking commenced along with the continued installation of the metal decking at the second floor and roof deck. The Concrete Contractor continues to form and install reinforcing at the grade beams and the elevator pit slab with concrete pours occurring as sections are complete. The site utilities continued through the month with testing and backfill of the gas, fire and domestic water lines, as well as the installation of the storm drain system piping. The Plumbing, HVAC and Electrical contractors have begun the install of hanger inserts and pipe and conduit penetration sleeves through the second-floor deck.

## Schedule Status

In the upcoming month, the Concrete Contractor prepares for the second floor deck concrete pour. The Structural Steel Contractor will be finishing up punch list items and prepare for setting the exterior stairs and trellis. The project is currently on schedule with construction scheduled to be complete late fall 2017 and move-in scheduled in the winter and open for spring 2018.



Elevator Pit Concrete Placement



Skylight Opening at Second Floor Deck

# PROJECT STATUS REPORT

December 2016 ♦ Issue 12



SAN LUIS OBISPO COUNTY COMMUNITY COLLEGE DISTRICT

## North County Campus Center



Main Entrance



Grade Beam Reinforcing Steel



Hanger Straps



Roof Decking Installation



TOGETHER, BUILDING VALUE EVERY DAY.

