

PROJECT STATUS REPORT

October 2016 ♦ Issue 10

San Luis Obispo Instructional Building

Project Overview

The new Instructional Building on the San Luis Obispo campus will be a 32,000 square foot, two-story structure. The first floor of the building will be comprised of eight high-capacity multi-discipline classrooms capable of serving up to 45 students each. It will also have one forum size classroom with a full capacity of 90 students. The second floor of the structure will consist of more than 40 offices, a large staff lounge area and three meeting rooms. Construction commenced on April 11, 2016 with an anticipated completion date in the fall of 2017.

Project Progress

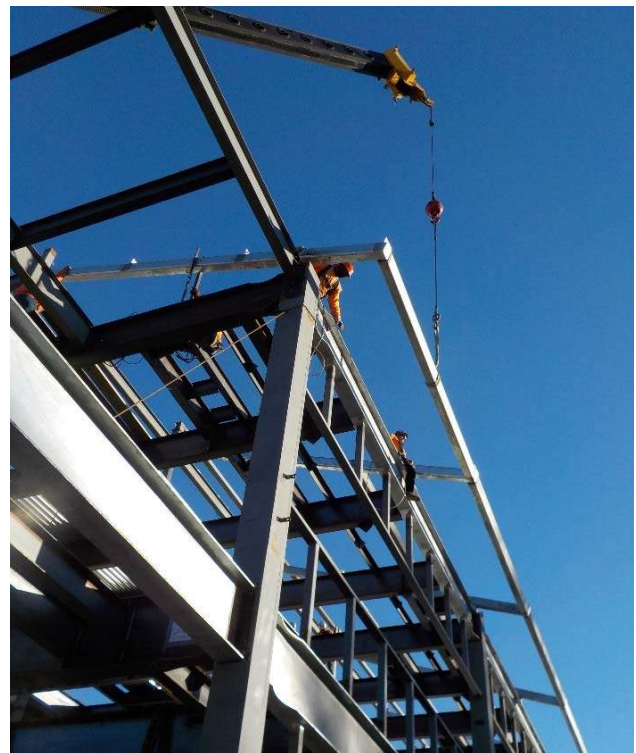
The project is nearing another significant construction milestone with the structural steel at 95% completion. The crane used for structural steel erection has demobilized and the steel contractor is onsite to complete the welds for the structure. A majority of the structural steel decking has been staged and tacked into place. 95% of the column baseplates have been grouted and cast in concrete. The building's underground storm drain and gas utilities have been completed and tied into the District's systems. Contractors have commenced with metal framing and coordination with mechanical, electrical, and plumbing for the second floor infrastructure.

Schedule Status

Structural steel erection will wrap up in early November leading to the preparation and placement of the second-floor concrete deck. Contractors will continue to make progress towards the next milestone of a watertight building with the roof, wall and window assemblies. The project is currently on schedule with construction to be completed late fall 2017 and move-in scheduled in the winter and open for spring 2018.



Structural Steel Erection at West End of Building



Placement of Mansard Framing Members

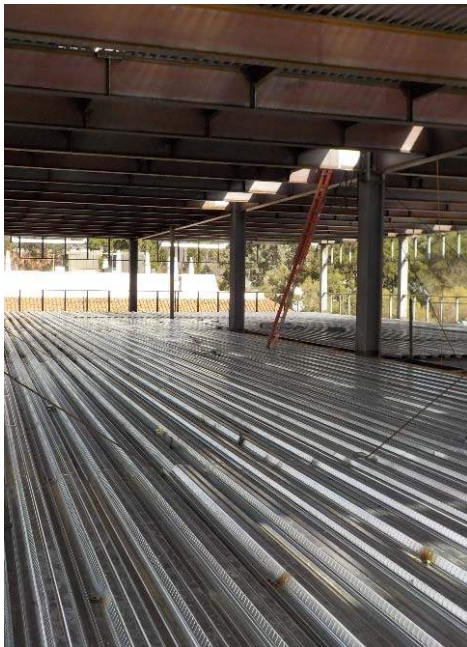
**San Luis Obispo
Instructional Building**



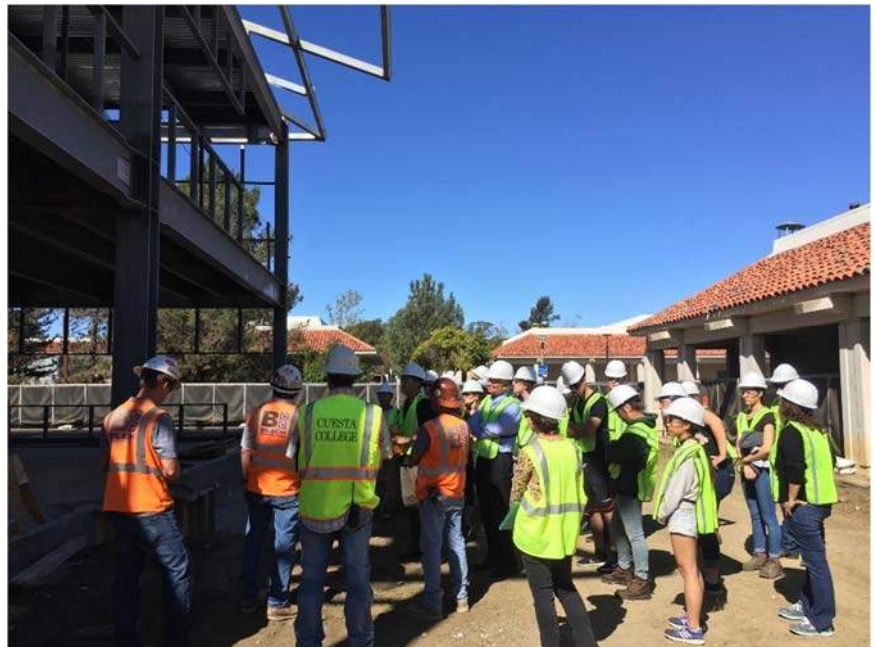
Installation of Steel Near the Elevator Hoistway



Built-up Box Column at West End
of Building



Metal Deck at the Second Floor



Jobsite Tour with Architecture & Engineering Classes

Project Overview

The new Cuesta College North County Campus Center Building will be a 43,000 square foot, two-story structure. It will house the various programs and offices displaced by the removal of non-compliant modular buildings. The demolition of these modular buildings has been completed in preparation for the new Campus Center Building. The project delivery method is CM Multi-Prime and contains thirteen trade bid packages.

Project Progress

The month of October started off with the Concrete Contractor placing and finishing approximately 275 cubic yards of concrete, completing a majority of the building’s slab on grade. A few days later, the remaining 42 cubic yards of concrete was placed for the depressed slab at the kitchen and restroom areas. The Electrical and Site Utilities Contractors continued excavation and installation of various electrical conduit and site utilities outside of the building footprint. The first Structural Steel delivery arrived on October 17th with erection starting that same day. Steel erection is approximately 80% complete going into the month of November.

Schedule Status

In the upcoming month, the Structural Steel Contractor will continue to hang the mansard roof steel members, begin installing and welding metal decking while plumbing and aligning the building. The project is currently on schedule with construction scheduled to be complete late fall 2017 and move-in scheduled in the winter and open for spring 2018



Building Slab On Grade Concrete Pour



Start of Structural Steel Erection



Structural Steel Erection Continued



Early Morning Start for SOG Pour



Depressed Slab Area