

**San Luis Obispo
Instructional Building**

Project Overview

The new Instructional Building on the San Luis Obispo campus will be a 32,000 square foot, two-story structure. The first floor of the building will be comprised of eight high-capacity multi-discipline classrooms capable of serving up to 45 students each. It will also have one forum size classroom with a full capacity of 90 students. The second floor of the structure will consist of more than 40 offices, a large staff lounge area and three meeting rooms. Construction commenced on April 11, 2016 with an anticipated completion date in the fall of 2017.

Project Progress

The first structural steel sequence was delivered at the end of August. The construction activities during the month of September included the ongoing delivery of structural steel components and the erection of the structural steel. The building’s structure is over fifty percent erected and the contractor has proceeded to plumb, line, bolt and partially weld the erected portions of the building. Additionally, towards the end of the month, the contractor started the steel decking installation for the second floor. In preparation for the building’s electrical tie-in to the campus scheduled for early October, the concrete pad for the new transformer was poured and the electrical contractor placed the transformer.

Schedule Status

Structural steel erection will continue through the middle of October at which point the contractors will begin to make the building watertight with the roof, wall and window assemblies. The project is currently on schedule with construction to be completed late fall 2017 and move-in scheduled in the winter and open for spring 2018.

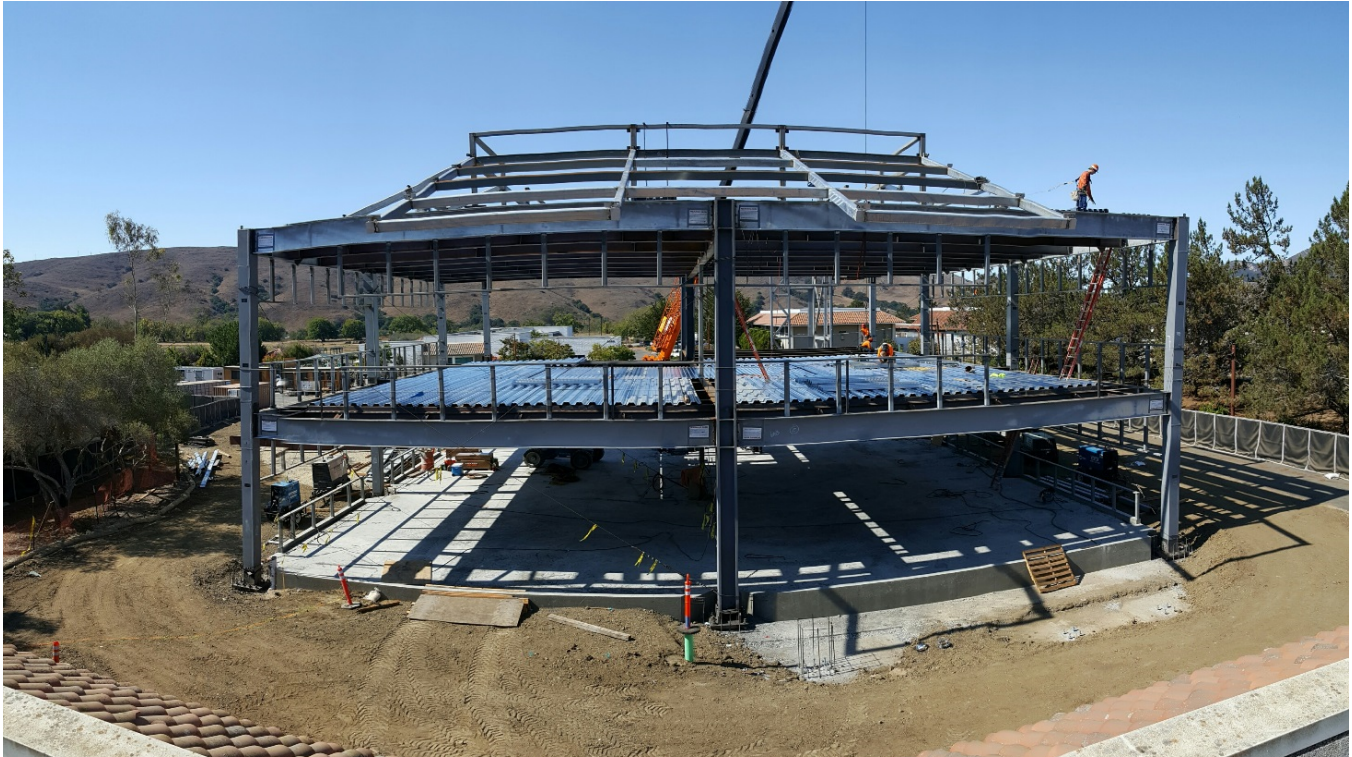


Finished Concrete for New Transformer Equipment



Start of Structural Steel Erection

**San Luis Obispo
Instructional Building**



View of the Project from Adjacent Rooftop



Placing Steel Column



Structural Steel of the Interior Stair Area

Project Overview

The new Cuesta College North County Campus Center Building will be a 43,000 square foot, two-story structure. It will house the various programs and offices displaced by the removal of non-compliant modular buildings. The demolition of these modular buildings has been completed in preparation for the new Campus Center Building. The project delivery method is CM Multi-Prime and contains thirteen trade bid packages.

Project Progress

Throughout the month of September, construction crews continued with the below slab utilities, completing the installation within the building footprint. The concrete contractor also completed the installation of the slab on grade vapor barrier and wrapped up the month with the installation of steel reinforcement for the concrete slab on grade.

The Site Utility Contractor continued working on underground utilities such as storm drain, sanitary sewer and chilled water.

Schedule Status

The project will start the month of October with a major milestone with the slab on grade concrete pour scheduled in the first week. Construction crews will also continue to install the underground utilities outside of the building footprint. Erection of the structural steel is anticipated to begin in October with the first delivery of structural steel scheduled towards the end of the month. The project is currently on schedule with construction scheduled to be complete late fall 2017 and move-in scheduled in the winter and open for spring 2018



Vapor Barrier Installation



Below Slab Utilities

PROJECT STATUS REPORT
September 2016 ♦ Issue 9



Vapor Barrier and Reinforcement for Concrete Slab on Grade



Vapor Barrier Installation & Sanitary Sewer



Sanitary Sewer Excavation