

PROJECT STATUS REPORT

July 2016 ♦ Issue 7

San Luis Obispo Instructional Building

Project Overview

The new Instructional Building on the San Luis Obispo campus will be a 32,000 square foot, two-story structure. The first floor of the building will be comprised of eight high-capacity multi-discipline classrooms capable of serving up to 45 students each. It will also have one forum size classroom with a full capacity of 90 students. The second floor of the structure will consist of more than 40 offices, a large staff lounge area and three meeting rooms. Construction commenced on April 11, 2016 with an anticipated completion date in the fall of 2017.

Project Progress

The concrete contractor has completed 75% of the first floor concrete slab, which included the pre-pour activities of setting forms and column block-outs, installation of a 12-inch layer of non-expansive fill, and installation of the vapor barrier. The electrical and plumbing contractors have been continuously onsite and are currently finishing the installation of the under-slab utilities at the building's restrooms. The remaining first floor concrete slab at the restrooms is scheduled to be poured early August. Lastly, the grading and paving contractor is preparing to tie-into the campus's existing gas system to bring new gas service to the building, which is also scheduled for early August.

Schedule Status

Upcoming activities include the final slab-on-grade concrete pour in early August followed by the arrival of structural steel mid-August. Structural steel erection is scheduled to continue through late September at which point the contractors will begin to make the building watertight with the roof, wall and window assemblies. The project is currently on schedule with construction to be completed late fall 2017 and move-in scheduled in the winter and open for spring 2018.



Non-expansive Fill below Slab-on-Grade



Below-Slab Vapor Barrier Installation at 60%

PROJECT STATUS REPORT

July 2016 ♦ Issue 7



SAN LUIS OBISPO COUNTY COMMUNITY COLLEGE DISTRICT

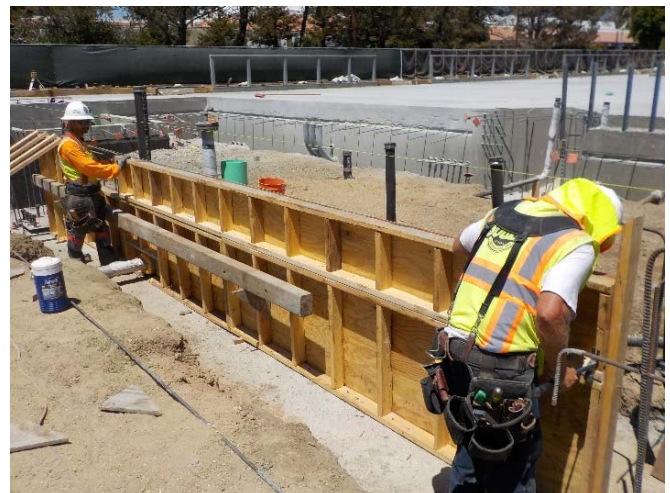
North County Campus Center



Vapor Barrier Installation Complete with Screed Pins Set and Ready for Concrete Placement



Early Stages of Underground Plumbing Utilities for the Bathrooms



Setting Formwork for the Final Slab-on-Grade Pour



New Conduits for Low Voltage Infrastructure



Placement of Concrete for Slab-on-Grade

PROJECT STATUS REPORT

July 2016 ♦ Issue 7

North County Campus Center

Project Overview

The new North County Campus Center will be a 43,000 square foot, two-story structure. It will house the various programs and offices displaced by the removal of non-compliant modular buildings. The demolition of these modular buildings has been completed in preparation for the new Campus Center. Construction commenced on May 16, 2016 with an anticipated completion date in the fall of 2017.

Project Progress

At the beginning of the month, the concrete contractor started excavation of the column pad footings. Crews completed the excavation for all column pad footings and the elevator pit. Grade beam excavation remains at 90% complete, with two locations untouched to allow for equipment access to the building pad. Following excavation, crews proceeded with the rebar installation and pre-fabrication and setting of anchor bolt templates for the column pad footings. On July 21st, after the verification of anchor bolt placement, the concrete pad footings for the structural steel columns were poured.

Schedule Status

For the month of August and into the month of September, construction crews will be laying out, excavating, and installing the underground utilities for the new building. The project is currently on schedule with construction scheduled to be complete late fall 2017 and move-in scheduled in the winter and open for spring 2018.



Anchor Bolt Templates



Excavation of the Elevator Pit and Adjacent Pad Footings

PROJECT STATUS REPORT

July 2016 ♦ Issue 7



SAN LUIS OBISPO COUNTY COMMUNITY COLLEGE DISTRICT

North County Campus Center



Rebar and Anchor Bolt Installation



Pad Footing Concrete Pour



TOGETHER, BUILDING VALUE EVERY DAY.

