



**UPDATES & ACTIVITIES THAT MAY IMPACT
CAMPUS OPERATION**
Week of January 11, 2016

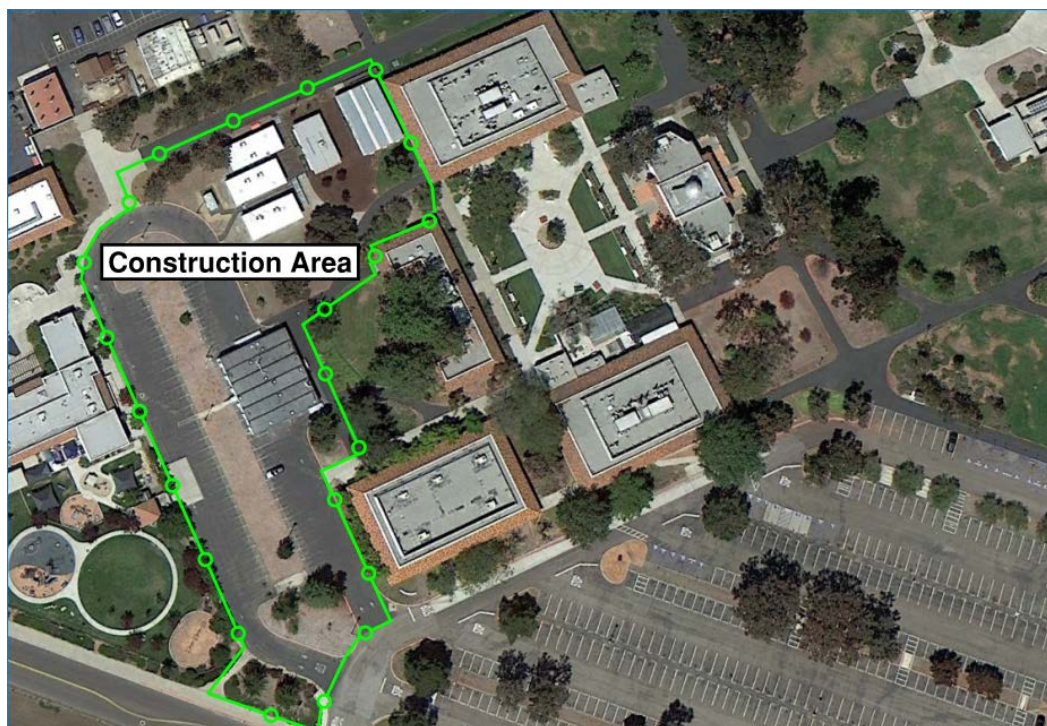
San Luis Obispo Instructional Building

Work this week: The project is on hold pending approval of the Division of the State Architect.

Access:	No access into fenced construction zone shown below
Noise:	None
Parking:	Partial closure for the duration of the project
Utilities:	None
Odors:	None



Temporary Construction Power



San Luis Obispo Campus